



**Engine Parts**

# **DETROIT DIESEL SERIES 60**

*Proven, reliable and  
always innovative.*

TRP® offers reliable aftermarket engine products designed and tested to match both OEM parts performance and life as well as exceed customer expectations for quality and value.



**OVERHAUL KITS • TURBOCHARGERS • CYLINDERS •  
ENGINE COMPONENTS**



Tested. Reliable. Guaranteed.

### Detroit Diesel Series 60 Engine Parts

Choosing the right replacement part or service for your vehicle—whether you own one, or a fleet—is one of the most important decisions you can make for your business. And, with tested TRP® parts it’s an easy decision.

Regardless of the engine you use, TRP® quality replacement parts are engineered to fit. Choose the parts that give you the best value for your business. Check them out at an approved TRP® retailer near you.

*The parts listed in this catalog are representative of the engine parts available, but not all inclusive of current and/ or future offerings.*

*All manufacturers' names, numbers, symbols and descriptions are for reference only. It is not implied that any part is the product of the manufacturer. Detroit Diesel® is a registered trademark of Detroit Diesel Corporation.*

*The cross reference information in this catalog is based upon data provided by several industry sources and our partners. While every attempt is made to ensure the information presented is accurate, we bear no liability due to incorrect or incomplete information.*

#### Product Availability

*Due to export restrictions and market demands, not all products are always available in every location. Check for availability in your area with your local TRP® Distributor.*

*No part of this marketing material may be reproduced in any manner without written permission from TRP® North America.*

# TABLE OF CONTENTS

## DETROIT DIESEL SERIES 60 ENGINE PARTS

### OVERHAUL KITS

- Inframe Kits . . . . . 8
- Overhaul Kits . . . . . 9

### ACCESSORY DRIVE COMPONENTS

- Accessory Drive Parts . . . . . 11
- Ball Bearings . . . . . 11
- Cylindrical Bearings . . . . . 11
- Shaft Bearings . . . . . 11
- Power Steering Pumps . . . . . 12

### AIR MANAGEMENT COMPONENTS

- Turbochargers & Components . . . . . 13
- Air Compressors & Components . . . . . 14

### COOLING SYSTEM COMPONENTS

- Cooling System Parts . . . . . 16
- Thermostats . . . . . 17
- Water Pumps & Components . . . . . 17
- Nuts . . . . . 20

#### TRP® North America

750 Houser Way N.  
Renton, WA 98057

[www.trpparts.com](http://www.trpparts.com)

## CRANKSHAFTS & COMPONENTS

<u>Crankshafts</u> . . . . .	21
<u>Crankshaft Parts</u> . . . . .	21
Ball Bearings . . . . .	22
Main Bearings . . . . .	22
Lower End Bearings . . . . .	22
Bolts . . . . .	23
Pins . . . . .	23
Washers . . . . .	23
<u>Oil Pumps</u> . . . . .	24
<u>Oil Pump Parts</u> . . . . .	24
Springs . . . . .	25

## CYLINDER COMPONENTS

<u>Cylinder Kits</u> . . . . .	26
<u>Cylinder Parts</u> . . . . .	26
Connecting Rod Bearings . . . . .	28
Bolts . . . . .	29
Nuts . . . . .	29
Pins . . . . .	29
Retainers . . . . .	29
<u>Pistons &amp; Components</u> . . . . .	29
Retainers . . . . .	30

## CYLINDER HEADS & COMPONENTS

<u>Cylinder Heads</u> . . . . .	31
Bolts . . . . .	32
Isolators . . . . .	32
Plugs . . . . .	32

Washers . . . . .	32
Spring/ Retainer Kits . . . . .	32
Studs . . . . .	32
Washers . . . . .	32
<u>Valve Train Parts</u> . . . . .	34

## ENGINE BLOCKS & COMPONENTS

<u>Engine Block Parts</u> . . . . .	38
Chains . . . . .	39
Bolts . . . . .	39
Isolators . . . . .	39
Pins . . . . .	40
Plugs . . . . .	40
<u>Camshafts &amp; Components</u> . . . . .	40
Washers . . . . .	40
<u>Oil Coolers</u> . . . . .	41

## ENGINE BRAKES & COMPONENTS

<u>Tune Up Kits</u> . . . . .	42
<u>Exhaust Brakes</u> . . . . .	42
<u>Engine Brake Parts</u> . . . . .	43

## FUEL SYSTEM COMPONENTS

<u>Injectors &amp; Components</u> . . . . .	45
Bolts . . . . .	46
<u>Fuel Pumps &amp; Components</u> . . . . .	47
Caps . . . . .	49
Pins . . . . .	49
Plugs . . . . .	49
Screws . . . . .	49

Spacers ..... 49  
 Springs..... 49

Tables ..... 73

**ENGINE PARTS**

Related Parts..... 50  
 Bolts..... 55  
 Bushings ..... 55  
 Caps ..... 55  
 Isolators ..... 56  
 Nuts ..... 56  
 Pins ..... 56  
 Plugs ..... 56  
 Retainers ..... 56  
 Rotocoils ..... 56  
 Screws..... 57  
 Spacers ..... 57  
 Spring/ Retainer Kits ..... 57  
 Springs..... 57  
 Studs ..... 57  
 Washers..... 57

**NATURAL GAS ENGINE COMPONENTS**

Air Intake ..... 58

**CROSS REFERENCE**

Cross Reference ..... 59

**INDEXES & TABLES**

Part Number Index ..... 65  
Subject Index..... 72

# TRP® ENGINE PARTS

TRP® Aftermarket Parts for trucks, trailers and buses are available through a network of authorized retailers that include Kenworth, Peterbilt and DAF dealerships around the world. From dump trucks to cement mixers, delivery vans to tractor-trailers, school buses to transit buses of any age, TRP® offers reliable aftermarket products that are designed and tested to not only meet OEM specifications, but to exceed customers' expectations regardless of which major manufacturer makes their vehicles.

## ***CONFIDENCE FOR THE ROAD AHEAD***

Drivers and their vehicles — from trucks, trailers and buses — are constantly being tested. Whether it's the elements — the schedule — or the terrain, you must be prepared. The TRP® line of parts and service is engineered to withstand those tests — and exceed them.

TRP® is dedicated to providing the reliability that drivers demand out of their vehicles. It's the partnership between tough parts and the roads that test them. It's a focus on extending the life of your vehicle, no matter the make, so you can get the most out of your truck, trailer or bus.

What the TRP® logo means to you is confidence. Confidence that you're covered, no matter your make or vehicle. Confidence that the job will get done. And the confidence to take on whatever test may wait around the next turn.

# DON'T SEE A PRODUCT YOU NEED?

Be sure to check with your local TRP®, Kenworth  
or Peterbilt dealer for additional products,  
pricing, and availability.

The TRP® Engine Parts Catalog contains information from  
a variety of suppliers, including those listed below. All  
brand-names, logos, images, information that came from  
our suppliers and vendors are trademarked, registered and  
property of that supplier.

**TRP®**

**American Power Source  
Center Manufacturing, Inc.  
Federal Mogul  
Haldex  
Illinois Auto Truck Co. Inc.  
Interstate-McBee  
Jacobs Vehicle Systems  
PacBrake**

*To provide feedback on this TRP® Engine Parts Catalog,  
please contact us at [feedback@TRPParts.com](mailto:feedback@TRPParts.com).*

TRP® Engine Parts Catalog ©2013

All manufacturers' names, symbols, and descriptions are for reference  
only. It is not implied that any part is the product of these manufacturers.

Detroit Diesel® and 60 Series® are registered trademarks of Detroit Diesel, Inc.

# DETROIT DIESEL SERIES 60

## SERIES 60 MODEL DESCRIPTION CHART AND SERIAL NUMBER LOCATION

LOCATED ON THE LEFT SIDE OF THE VALVE COVER IS AN OPTION PLATE SHOWING THE ENGINE SERIAL NUMBER, MODEL NUMBER AND ANY OPTIONAL EQUIPMENT USED ON THE ENGINE. IF THE OPTION PLATE IS MISSING THE ENGINE SERIAL NUMBER IS STAMPED ON THE CYLINDER BLOCK BELOW THE MANIFOLDS.

SERIES 60 SERIAL NUMBERS WILL BEGIN 06R FOLLOWED BY SEVEN DIGITS. THE ENGINE SERIAL NUMBER IS REQUIRED WHEN PLACING A PARTS ORDER.

### OPTION PLATE EXAMPLE – 6067-WK60

Series	# of Cyl.	Application	Displacement	Engine Control	Customer Designation
6	06	7	W	K	60
Series 60	6	2-Marine	B -12.7L premium	T -DDEC I	9x – Military
		3-Industrial	E -11.1L	U -DDEC II	28 – Coach/Bus 1991 & up
		5-Generator	F -14.0L	K -DDEC III or IV	32 – Underground Mining
		7-Vehicle	G -12.7L std	V -DDEC V	33 – Nonroad Certified
			H -14.0L	G -DDEC VI	35 – Nonroad Certified Genset
			L -11.1L		40 – 1991 & Earlier
			M -12.7L std		60 – 1991 & Later on-highway
			P -12.7L premium		73 – Watercooled Exhaust C&I 74 – Watercooled & Offshore
					2E – EGR Motor Coach
			S -11.1L super		4E – EGR Fire Truck
			T -12.7L std		5E –EGR on-highway Crane
			W -11.1L		6E –EGR on-highway Truck

Model number 6067-WK60 represents an 11.1 liter Series 60 engine that is controlled with DDEC III or IV electronics to be used in a 1991 or later truck.

Correct engine serial number and engine arrangement number are required for accurate parts identification.





Part No.	OEM No.	Description	UOM	Qty. Per Engine	SPQ	Comments
23532562QMC1FDDC		Engine Overhaul Kit — In-Frame Articulated Piston 16.5:1 Heavy Pin + Q Kit	EA	1	1	Q Kits include cam bearings, head bolts, and injector kits not included with standard IF/OH kits.
23532561MC1FDDC		Engine Overhaul Kit — In-Frame S60 Articulated 15:1 Heavy Pin	EA	1	1	
23532561QMC1FDDC		Engine Overhaul Kit — In-Frame S60 Articulated 15:1 Heavy Pin + Q Kit	EA	1	1	

## OVERHAUL KITS

Table 3: Overhaul Kits

Part No.	OEM No.	Description	UOM	Qty. Per Engine	SPQ
23532565DDC	23532565	Engine Overhaul Kit — (23532555 CK)	EA	1	1
23532307DDC	23532307	Engine Overhaul Kit — S60	EA	1	1
23537081DDC	23537081	Engine Overhaul Kit — S60 14L	EA	1	1
23536443DDC		Complete Overhaul Gasket Set — S60 DDEC V EGR	EA	1	1

Table 4: Articulated Piston Overhaul Kits

Part No.	OEM No.	Description	UOM	Qty. Per Engine	SPQ	Comments
23532574DDC	23532574	Engine Overhaul Kit — Articulated Piston	EA	1	1	
23532577DDC	23532577	Engine Overhaul Kit — Articulated Piston 16.5:1	EA	1	1	
23532562MCOHDDC		Engine Overhaul Kit — Articulated Piston 16.5:1 Heavy Pin	EA	1	1	

## Detroit Diesel Series 60

Part No.	OEM No.	Description	UOM	Qty. Per Engine	SPQ	Comments
23532562QMC0HDDC		Engine Overhaul Kit — Articulated Piston 16.5:1 Heavy Pin + Q Kit	EA	1	1	Q Kits include cam bearings, head bolts, and injector kits not included with standard IF/OH kits.

Table 5: Gaskets, Rings & Seals

Part No.	OEM No.	Description	UOM	Qty. Per Engine	SPQ	Comment
23512691MCBDDC		Complete Overhaul Gasket Set — S60 w/o Rocker Cover Gasket	EA	1	1	Crankshaft Seals Not Included

# ACCESSORY DRIVE COMPONENTS

Quality Accessory Drive Components for the Series 60.

## ACCESSORY DRIVE PARTS

Table 6: Bearings

Part No.	OEM No.	Description	UOM	Qty. Per Engine	SPQ
<b>BALL BEARINGS</b>					
23518178DDC	2351817	Accessory Drive Ball Bearing — For Accessory Drive	EA	1	1
8929024DDC	8929024	Accessory Drive Ball Bearing — S60 - For Accessory Drive	EA	1	1
FP23509203	23509203	Accessory Gear Shaft Ball Bearing	EA	1	1
<b>CYLINDRICAL BEARINGS</b>					
23511745DDC	23511745	Roller Cylindrical Bearing — For Accessory Drive	EA	1	1
<b>SHAFT BEARINGS</b>					
23503704DDC	23503704	Accessory Drive Bearing — S60 - For Fan Shaft - Inner	EA	1	1
FP23503535	23503535	Outer Fan Shaft Bearing — For Fan Shaft - Outer	EA	1	1

Table 7: Bushings

Part No.	OEM No.	Description	UOM	Qty. Per Engine	SPQ
23512307DDC	23512307	Engine Control Module (ECM) Mounting Isolator Bushings — DDECIII	EA	8	1
FP23502879	23502879	Isolator Bushing — DDECIII	EA	8	1

Table 8: Gaskets, Rings & Seals

Part No.	OEM No.	Description	UOM	Qty. Per Engine	SPQ
23511746DDC	23511746	Accessory Drive Retaining Ring — For Accessory Drive	EA	1	1

## Detroit Diesel Series 60

Part No.	OEM No.	Description	UOM	Qty. Per Engine	SPQ
8929216DDC	8929216	Accessory Drive Retaining Ring — S60; 1.618"OD	EA	1	1
FP23505643	23505643	Accessory Drive Lock Ring — For Power Steering Pump	EA	1	1
8929062DDC	8929062	Accessory Drive Ring Lock S60 — For Air Compressor	EA	1	1
FP23509204	23509204	Accessory Drive Lock Ring	EA	1	1
FP8929064	8929064	Snap Ring — 3.121" OD — For Accessory Drive	EA	2	1

## POWER STEERING PUMPS

Table 9: Gaskets, Rings & Seals

Part No.	OEM No.	Description	UOM	Qty. Per Engine	SPQ
23516100DDC	23516100	Power Steering Pump Gasket	EA	1	1

# AIR MANAGEMENT COMPONENTS

Quality Remanufactured Air Compressors, New and Remanufactured Turbochargers.

## TURBOCHARGERS & COMPONENTS



Table 10: Turbochargers

Part No.	OEM No.	Description	UOM	Qty. Per Engine	SPQ
172743BWT	172743	Turbocharger — Detroit Diesel Series 60	EA	1	1
23518588DDC	23518588	Turbocharger — Detroit Diesel Series 60 12.7L (New- No Core)	EA	1	1
23528065DDC	23528065	Turbocharger — Detroit Diesel Series 60 (New - No Core)	EA	1	1
23504966DDC	23504966	Turbocharger — Detroit Diesel Series 60 TMF51 (New - No Core)	EA	1	1
23508410DDC	23508410	Turbocharger — Detroit Diesel Series 60 TMF5102 (New - No Core)	EA	1	1
23515635MDDC	23515635	Turbocharger — Detroit Diesel Series 60 TMF55 (New - No Core)	EA	1	1
23518588MDDC	23518588	Turbocharger — Detroit Diesel Series 60 TMF55 (New - No Core)	EA	1	1

Table 11: Gaskets, Rings & Seals

Part No.	OEM No.	Description	UOM	Qty. Per Engine	SPQ
8929529DDC	8929529	Turbocharger Mounting Gasket — S50/S60; Exhaust-Inlet Connection	EA	1	1
23508408DDC	23508408	Turbocharger Seal	EA	4	4
19594JCB	19594	Turbocharger Gasket	EA	1	1
8929285DDC	8929285	Turbocharger Oil Drain/ Return Gasket — S50/S60	EA	1	1

## AIR COMPRESSORS & COMPONENTS

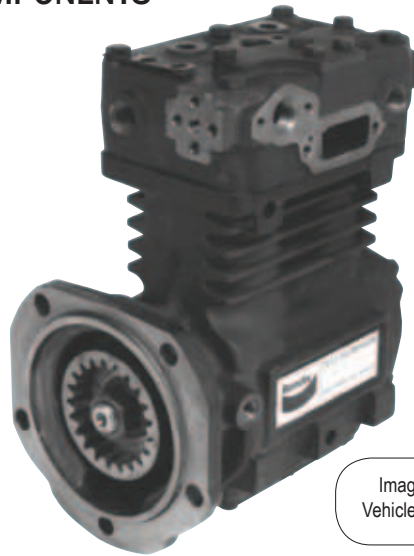


Image Courtesy of Bendix Commercial Vehicle Systems, LLC. All rights reserved.

Table 12: Air Compressors - Reman

Part No.	OEM No.	Description	UOM	Qty. Per Engine	SPQ
5004188BXR		Reman Air Compressor; TF 550; 69 Tooth Gear w/ 21 Tooth Spline; non EGR S60	EA	1	1
5004187BXR		Reman Air Compressor; TF 750; 69 Tooth Gear w/ 21 Tooth Spline; non EGR S60	EA	1	1
107622BXR		Reman Air Compressor; TF550; 21 Tooth Spline; non EGR S60	EA	1	1
107623BXR		Reman Air Compressor; TF750; 21 Tooth Spline; non EGR S60	EA	1	1

Table 13: Gaskets, Rings &amp; Seals

Part No.	OEM No.	Description	UOM	Qty. Per Engine	SPQ
8929299DDC	8929299	Air Compressor Drive Housing Gasket	EA	1	1
23515145DDC	23515145	Air Compressor Mounting Gasket	EA	1	1

## COOLING SYSTEM COMPONENTS

Quality Thermostats, Water Pumps and components.

### COOLING SYSTEM PARTS

Table 14: Hoses

Part No.	OEM No.	Description	UOM	Qty. Per Engine	SPQ
8929875DDC	8929875	Water Bypass Hose, Silicone, non-metallic - S60	EA	2	1
23506325DDC	23506325	Water Pump Hose To Oil Cooler, non-metallic — 2.6875" OD	EA	2	1

Table 15: Sensors

Part No.	OEM No.	Description	UOM	Qty. Per Engine	SPQ
23514708DDC	23514708	Sensor Assembly — Cool Temp	EA	1	1

Table 16: Gaskets, Rings & Seals

Part No.	OEM No.	Description	UOM	Qty. Per Engine	SPQ
5103951DDC	5103951	Fan Shaft Seal	EA	1	1
FP9411502	9411502	Mechanical Governor Retaining Ring	EA	1	1



## THERMOSTATS



Table 17: Thermostats

Part No.	OEM No.	Description	UOM	Qty. Per Engine	SPQ
23532436DDC	23532436	Thermostat Kit —190°F	EA	1	1
23503827DDC	23503827	Thermostat —160°F S60	EA	1	1
23503826DDC	23503826	Thermostat —170°F	EA	1	1
23503825DDC	23503825	Thermostat —180°F S60	EA	1	1

Table 18: Gaskets, Rings & Seals

Part No.	OEM No.	Description	UOM	Qty. Per Engine	SPQ
5132155DDC	5132155	Thermostat Seal	EA	2	6

## WATER PUMPS & COMPONENTS

Table 19: Overhaul Kits

Part No.	OEM No.	Description	UOM	Qty. Per Engine	SPQ
FP23509105	23509105	Water Pump Overhaul Kit	EA	1	1

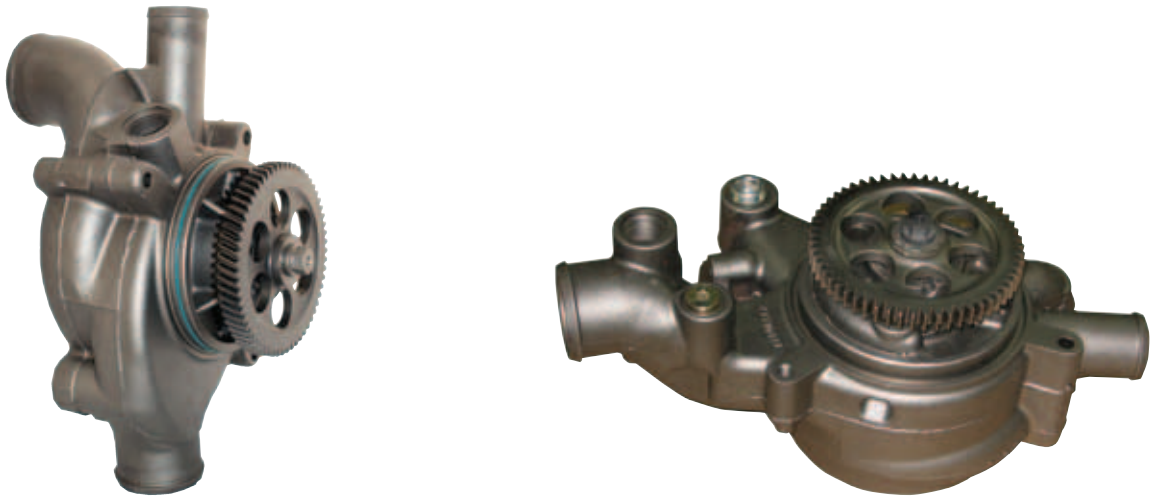


Table 20: Water Pumps - New

Part No.	OEM No.	Description	UOM	Qty. Per Engine	SPQ
FP316GC1210A	316GC1210A	Water Pump Assembly	EA	1	1
23522707DDC	23522707	Fresh Water Pump S60 After December 1990	EA	1	1
23526039DDC	23526039	Fresh Water Pump — S60 Hi-Flow	EA	1	1

Table 21: Water Pumps - Reman

Part No.	OEM No.	Description	UOM	Qty. Per Engine	SPQ
RW1160XM1DRMAN	23509067	Reman Water Pump — DDA 60 Series	EA	1	1
RW4124XM1DRMAN	23531257	Reman Water Pump	EA	1	1
RW4122XM1DRMAN		Reman Water Pump — S60	EA	1	1
RW4122RXM1D	23505895, 23520136	Reman Water Pump — S60 Coreless	EA	1	1
RW4122PXM1DRMAN	23505895, 23520136	Reman Water Pump — S60 7 Vane Premium Series	EA	1	1
RW4123XM1DRMAN	23522707	Reman Water Pump — S60 High Capacity	EA	1	1
RW4123PRXM1DRMN	23522707	Reman Water Pump — S60 High Capacity Coreless	EA	1	1
RW4125PXM1DRMAN	23522721	Reman Water Pump — S60 Pocket Style	EA	1	1
RW4123PXM1DRMAN	23522707	Reman Water Pump — S60 Premium	EA	1	1



Table 22: Water Pump Covers

Part No.	OEM No.	Description	UOM	Qty. Per Engine	SPQ
8922383DDC	8922383	Fresh Water Pump Cover — Non-Metallic S60	EA	1	1

Table 23: Water Pump Shafts

Part No.	OEM No.	Description	UOM	Qty. Per Engine	SPQ
FP8929157	8929157	Water Pump Shaft — For Front Mounted Pumps	EA	1	1
23505896DDC	23505896	Water Pump Shaft — w/o Key S60 After December 1990 — For Gear Case Mounted Pumps	EA	1	1

Table 24: Crank Keys

Part No.	OEM No.	Description	UOM	Qty. Per Engine	SPQ
FP8929334	8929334	Crank Key- Woodruff — For Fresh Water Pump Shaft	EA	1	1

Table 25: Water Pump Impellers

Part No.	OEM No.	Description	UOM	Qty. Per Engine	SPQ
8929512DDC	8929512	Water Pump Impeller — For Use With Front Mounted Pumps	EA	1	1

## Detroit Diesel Series 60

Part No.	OEM No.	Description	UOM	Qty. Per Engine	SPQ
23517973DDC	23517973	Water Pump Impeller — For Use With Gear Case Mounted Pumps	EA	1	1

Table 26: Bearings

Part No.	OEM No.	Description	UOM	Qty. Per Engine	SPQ
8929422DDC	8929422	Water Pump Bearing — S60 — For Water Pump Shaft	EA	1	1

Table 27: Gaskets, Rings & Seals

Part No.	OEM No.	Description	UOM	Qty. Per Engine	SPQ
8922407DDC	A8922407	Fresh Water Pump Cover Retaining Ring — S60	EA	1	1
FP8929063	8929063	Retaining Ring; 3.734" OD — For Fan Drive	EA	1	1
23505024DDC	23505024	Water Pump Cover Ring Seal — S60 — 4.218" OD; Rectangle or Square Seal	EA	1	12
23507073DDC	23507073	Water Pump Gasket — S60	EA	1	1
23512048DDC	23512048	Water Pump Cover O-Ring; 4.77" OD — For Gear Case Mounted Pumps	EA	1	1
8929427DDC	8929427	Water Pump Retainer — Bearing & Seal S60	EA	1	1
23520377DDC	23520377	Water Pump O-Ring Seal — For Gear Case Mounted Pumps	EA	1	1
8929158DDC	8929158	Water Pump Ring Seal — For Front Mounted Pumps	EA	1	1
8929134DDC	8929134	Water Pump Seal — Lip Type S60	EA	1	1
FP23522433	23522433	Water Pump Seal — Unitized	EA	1	1
8929510DDC	8929510	Water Pump Cover Ring Seal — Front Mounted Pumps	EA	1	6

Table 28: Hardware

Part No.	OEM No.	Description	UOM	Qty. Per Engine	SPQ
<b>NUTS</b>					
FP11509584	11509584	Water Pump Lock Nut	EA	1	1

# CRANKSHAFTS & COMPONENTS

Quality new Crankshafts and related parts.

## CRANKSHAFTS



Table 29: Crankshafts - New

Part No.	OEM No.	Description	UOM	Qty. Per Engine	SPQ
FP23515597	23515597	Crankshaft — 11L 12-Hole	EA	1	1
23527225DDC	23527225	Crankshaft — 14L S60 12-Bolt	EA	1	1

## CRANKSHAFT PARTS

Table 30: Sensors

Part No.	OEM No.	Description	UOM	Qty. Per Engine	SPQ
8929387DDC	8929387	Sensor — S60 SRS Synchronous Reference Sensor	EA	1	1
8929388DDC	8929388	Sensor — S60 TRS Timing Reference Sensor	EA	1	1

Table 31: Bull Gears

Part No.	OEM No.	Description	UOM	Qty. Per Engine	SPQ
8929168DDCR	8929168	Timing Bull Gear and Hub Assembly — S60 Early Style	EA	1	1
23513559DDCR	23513559	Timing Bull Gear and Hub Assembly — S60 Late Style	EA	1	1

## Detroit Diesel Series 60

Table 32: Bearings

Part No.	OEM No.	Description	UOM	Qty. Per Engine	SPQ
<b>BALL BEARINGS</b>					
23503707DDC	23503707	Clutch Pilot Position Ball Bearing	EA	1	1
<b>MAIN BEARINGS</b>					
8929670DDC	8929670	Main Bearings, Plain — For Crankshaft S60 Set Upper/Lower	EA	6	6
8929682DDC	8929682	Flanged Main Bearing Shell Set — 0.508mm	EA	1	1
FP8929683	8929683	Main Bearing (Thrust) Shell Set — 0.762mm under sized	EA	1	1
8929680DDC	8929680	Main Bearing (Thrust) Shell Set — S60, STD, flanged	EA	1	1
8929681DDC	8929681	Main Bearing (Thrust) Shell Set — S60, 0.254mm, under sized	EA	1	1
8929671DDC	8929671A	Main Bearing Pair — 0.254mm (0.010")	EA	6	1
8929671DDC	8929671	Main Bearing Shell Set — S60 .254mm Under	EA		1
8929672DDC	8929672A	Main Bearing Pair — 0.508mm (0.020")	EA	6	1
FP8929673A	8929673A	Main Bearing Pair — 0.762mm (0.030")	EA	6	1
<b>LOWER END BEARINGS</b>					
23533692DDC	23533692	Lower End Bearing Kit	EA	1	1
23527914DDC	23527914	Lower End Bearing Kit — 14L Non-EGR	EA	1	1
23535280DDC	23535280	Lower End Bearing Kit — S60; STD Size; EGR	EA	1	1
23531606DDC	23531606	Lower End Bearing Kit (Late)	EA	1	1
23531604DDC	23531604	Lower End Bearing Kit (Narrow) — Including O.A.L. rod bearings 1.7100" or 43.430mm	EA	1	1
23531605DDC	23531605	Lower End Bearing Kit (Wide) — Including O.A.L. rod bearings 1.8670" or 47.430mm	EA	1	1

Table 33: Gaskets, Rings & Seals

Part No.	OEM No.	Description	UOM	Qty. Per Engine	SPQ
23518355DDC	23518355	Crankshaft Seal — Front	EA	1	1
23519651DDC	23519651	Crankshaft Seal — Rear	EA	1	1
23501544DDC	23501544	Crankshaft Rear Seal — S60 built after May 1999	EA	1	1
5141452DDC	5141452	Gear Case Cover O-Ring	EA	1	1

Part No.	OEM No.	Description	UOM	Qty. Per Engine	SPQ
23513578DDC	23513578	Seal & Sleeve Rear Crank Assembly — Double Lip Wrap-Around	EA	1	1
23516969DDC	23516969	Seal & Sleeve Rear Crankshaft Assembly — Detroit Diesel — 4S, Teflon Lip	EA	1	1

Table 34: Hardware

Part No.	OEM No.	Description	UOM	Qty. Per Engine	SPQ	Comment
<b>BOLTS</b>						
5103534DDC	5103534	Lock Bolt for Idler Gear — 5/16"-24 x 1/2" (Vibra-Tite Coated)	EA	6	25	One time use; Do not reuse
8929448DDC	8929448	Idler Gear Assembly Bolt — S60	EA		1	
<b>PINS</b>						
5147345DDC	5147345	Governor Control Link Pin	EA		1	
<b>WASHERS</b>						
5116197DDC	5116197	Thrust Washer 53 STD	EA	4	4	
23530554DDC	23530554	Thrust Washer — Front S60	EA	2	2	ESN 06R0762049
23530555DDC	23530555	Thrust Washer — Rear S60	EA	2	2	
FP8929085S	8929085S	Thrust Washer Set — Upper Position	EA	1	1	
8929085DDC	8929085	Thrust Washer — STD, S60 — Upper Position	EA	2	2	
FP8929697	8929697	Thrust Washer — Upper 0.127mm Oversize — Upper Position	EA	2	1	
FP8929698	8929698	Thrust Washer — Upper 0.254mm Oversize — Upper Position	EA	2	1	
5133981DDC	5133981	Vibration Damper Washer — 19/32"	EA	6	25	

## OIL PUMPS

Table 35: Oil Pumps

Part No.	OEM No.	Description	UOM	Qty. Per Engine	SPQ
23505886DDC	23505886	Oil Gear Driven Pump — S60	EA	1	1

## OIL PUMP PARTS

Table 36: Valves

Part No.	OEM No.	Description	UOM	Qty. Per Engine	SPQ
8922740DDC	8922740	Low Pressure Regulator Valve	EA	1	1

Table 37: Bushings

Part No.	OEM No.	Description	UOM	Qty. Per Engine	SPQ
FP5127978	5127978	Oil Pump Bushings — 3 Used in Body, 2 Used in Cover	EA	5	1

Table 38: Gaskets, Rings & Seals

Part No.	OEM No.	Description	UOM	Qty. Per Engine	SPQ
8929344DDC	8929344	Oil Pump to Block Inlet Gasket	EA	1	1
8929347DDC	8929347	Oil Pump Outlet Gasket (To Block)	EA	1	1
23505891DDC	23505891	Oil Pump O-Ring Seal — Outlet	EA	1	1
23505892DDC	23505892	Oil Pump Seal O-Ring — Inlet	EA	1	1



Table 39: Hardware

Part No.	OEM No.	Description	UOM	Qty. Per Engine	SPQ	Comment
<b>SPRINGS</b>						
5126327DDC	5126327	Oil Pressure Regulator Spring — Outlet Bypass Valve & Oil Pressure Regulator; 2.96" Free Length	EA	1	1	11.1L & 12.7L Series 60
5155765DDC	5155765	Oil Press Relief Valve Spring	EA		1	
5177778DDC	5177778	Oil Cooler Bypass Valve Spring	EA	12	1	

## CYLINDER COMPONENTS

### CYLINDER KITS

Table 40: Cylinder Head Kits

Part No.	OEM No.	Description	UOM	Qty. Per Engine	SPQ
23532590DDC	23532590	Complete Cylinder Kit — S60: 2.5mm top ring, Non-TLC	EA	6	1
23532555DDC	23532555	Complete Cylinder Kit — S60: 2.5mm top ring, TLC	EA	6	1
23532558DDC	23532558	Cylinder Kit — 16.5:1; 2.5mm	EA	6	1

Table 41: Cylinder Kits

Part No.	OEM No.	Description	UOM	Qty. Per Engine	SPQ	Comment
23532557DDC	23532557	Cylinder Kit — S60; TLC liner; 2.5mm Top Ring; 15:1 CR; With 70 Crown	EA	6	1	Kit Contains: Piston Kit, Liner Kit, & Rings
23530665DDC	23530665	Cylinder Kit — Articulated Piston 14L S60	EA	6	1	
23532562DDC	23532562	Cylinder Kit — Articulated Piston 16.5:1 Heavy Pin	EA	6	1	
23532561DDC	23532561	Cylinder Kit — S60 15:1; Steel Crown; Heavy Pin; 2.50mm Top Ring	EA	6	1	12.7L Engine Block

### CYLINDER PARTS

Table 42: Liners

Part No.	OEM No.	Description	UOM	Qty. Per Engine	SPQ
23532468DDC	A23532468	Cylinder Liner — w/ Sealing Rings; 5.118" bore, STD	EA	6	1

Table 43: Liner Kits

Part No.	OEM No.	Description	UOM	Qty. Per Engine	SPQ	Comment
23531250DDC	23531250	Liner Kit — S60 14L	EA	6	1	Kit Includes: Crevice Seal, D-Ring Seals
23531249DDC	23531249	Liner Kit — w/ Sealing Rings S60 12.7L — Top Liner Cooled, Non-EGR Engine's, Cylinder Liner (Plain Bore) (DIA.-130mm) FF	EA	6	1	Kit Includes: Crevice Seal, D-Ring Seals

Table 44: Liner Shims

Part No.	OEM No.	Description	UOM	Qty. Per Engine	SPQ
5199569DDC	5199569	Cylinder Liner — 0.002" Shim	EA		1

Table 45: Liner Sleeves

Part No.	OEM No.	Description	UOM	Qty. Per Engine	SPQ
23525500DDC	23525500	Counter Bore Sleeve	EA		1



Table 46: Bearings

Part No.	OEM No.	Description	UOM	Qty. Per Engine	SPQ
<b>CONNECTING ROD BEARINGS</b>					
23526141DDC	23526141	Connecting Rod Bearing — S60 12.7L/14L	EA	6	1
8929710DDC	8929710	Connecting Rod Shell Set — S60 XH STD (Early) O.A.L. 1.7100" or 43.43mm	EA	6	1
23515582DDC	23515582	Connecting Rod Shell Set — 0.254mm US	EA	6	1
23526142DDC	23526142	Connecting Rod Shell Set — S60 Steel Piston	EA	4	1
5149572DDC	5149572	Connecting Rod Shell Set — STD	EA	4	1
5149575DDC	5149575	Connecting Rod Shell Set — 0.010"	EA	6	1
5149577DDC	5149577	Connecting Rod Shell Set — 0.020"	EA	6	1
23515581DDC	23515581	Connecting Rod Bearing Shell Set — S60 Wide XH, STD, O.A.L. 1.8670" or 47.430 mm	EA	6	1

Table 47: Gaskets, Rings & Seals

Part No.	OEM No.	Description	UOM	Qty. Per Engine	SPQ
5103646DDC	5103646	Breather Ring Seal — S60	EA	1	1
8929013DDC	8929013	Cylinder Liner Crevice Seal	EA	6	6
8929176DDC	8929176	Cylinder Liner D-Ring Seal	EA	12	1
S601NJMCBDDC		O-Ring Kit	EA	1	1
23531252DDC	23531252	Piston Ring Set — S60 14L	EA	6	1

Table 48: Hardware

Part No.	OEM No.	Description	UOM	Qty. Per Engine	SPQ
<b>BOLTS</b>					
FP8929355	8929355	Connecting Rod Bolt	EA	12	1
5148373DDC	5148373	Piston Pin Bolt — 7/16" x 2" x 12" Point	EA		25
8929337DDC	8929337	Piston Pin Bolt — S60	EA		10
<b>NUTS</b>					
8929019DDC	8929019	Connecting Rod Nut	EA	12	1
<b>PINS</b>					
141346DDC	141346	Dowel Pin — 3/16" x 1/2"	EA		4
<b>RETAINERS</b>					
5188405DDC	5188405	Piston Pin Retainer	EA		1

## PISTONS & COMPONENTS

Table 49: Piston Kits

Part No.	OEM No.	Description	UOM	Qty. Per Engine	SPQ
FP23522495	23522495	Piston Kit — Cross Head 17:1 CR	EA	6	1

Table 50: Nozzles

Part No.	OEM No.	Description	UOM	Qty. Per Engine	SPQ
23528493DDC	23528493	Piston Cooling Nozzle	EA	6	1

## Detroit Diesel Series 60

Table 51: Gaskets, Rings & Seals

Part No.	OEM No.	Description	UOM	Qty. Per Engine	SPQ
23503747DDC	23503747	Piston Ring Set — S60 2.55mm Top, STD	EA	6	1
23531251DDC	23531251	Piston Ring Set — S60 3.0mm Top	EA	6	1

Table 52: Hardware

Part No.	OEM No.	Description	UOM	Qty. Per Engine	SPQ
<b>RETAINERS</b>					
5180250DDC	5180250	Piston Pin Retainer	EA	6	1
23521781DDC	23521781	Piston Pin Retainer — S60	EA	6	1

# CYLINDER HEADS & COMPONENTS

Quality parts related specifically to the Cylinder Heads.

## CYLINDER HEADS

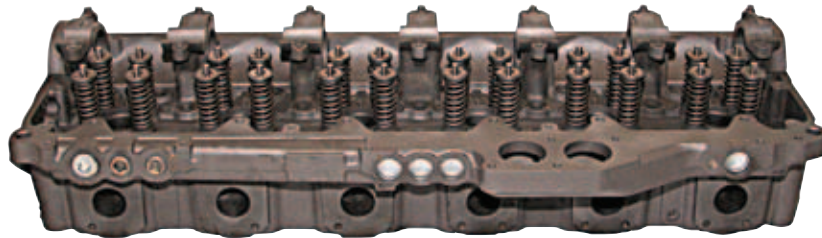


Table 53: Cylinder Heads - New

Part No.	OEM No.	Description	UOM	Qty. Per Engine	SPQ
5149877DDC	5149877	Cylinder Head - Bare 6V/12V 92	EA	1	1

Table 54: Cylinder Heads - Reman

Part No.	OEM No.	Description	UOM	Qty. Per Engine	SPQ	Comment
23525566HGDDCR	23525566HG	Reman Cylinder Head Kit — Group Package	EA	1	1	Head Group Kit: Cylinder Head, Head Gasket Set, Camshaft Bearings, Head Bolts and Injector O-Rings.
23531254DDCR	23531254	Reman Cylinder Head	EA	1	1	
23511362DDCR	23511362	Reman Cylinder Head - Detroit S50	EA	1	1	
23525566DDCR	23525566	Reman Cylinder Head - S60 Complete	EA	1	1	
23533690DDCR	23533690	Reman Cylinder Head - S60, EGR Complete	EA	1	1	
23538858DDCR	23538858	Reman Cylinder Head - S60, EGR Stainless Steel Injector Cups	EA	1	1	



Table 55: Related Parts

Part No.	OEM No.	Description	UOM	Qty. Per Engine	SPQ
<b>BOLTS</b>					
MCB60HBK	23530768	Cylinder Head Bolt Kit — S60 (1EA=38PC)	EA	38	1
8929357DDC	8929357	Manifold To Head Exhaust Bolt — S60	EA	12	1
<b>ISOLATORS</b>					
23517912DDC	23517912	Rocker Cover Bolt Isolator — For Use with 1-Piece Rocker Cover	EA	4	1
23517911DDC	23517911	Rocker Cover Isolator Assembly — For Use with 2-Piece Rocker Cover	EA	10	10
<b>PLUGS</b>					
8926993DDC	8926993	Cylinder Head Pipe or Freeze Plug — 1/4" x 18mm; Recessed Socket Head	EA	1	10
8923313DDC	8923313	Pipe/ Freeze/ Block Plug — 3/4" x 14mm Square Socket	EA	1	25
<b>WASHERS</b>					
5104439DDC	5104439	Exhaust Manifold Washer — 7/16"	EA	4	25
<b>SPRING/ RETAINER KITS</b>					
23528939DDC	23528939	Follower Spring & Retainer Kit	EA	6	1
<b>STUDS</b>					
23507438DDC	23507438	Exhaust Manifold Stud — Manifold To Turbo; M10 x 1.5 x 44.0mm	EA	4	1
8929425DDC	8929425	Exhaust Manifold Stud — S60; Manifold To Turbo; M10 x 1.5 x 50.0mm	EA	4	4
<b>WASHERS</b>					
8929328DDC	8929328	Cylinder Head Bolt Washer	EA	38	25



Table 56: Gaskets, Rings & Seals

Part No.	OEM No.	Description	UOM	Qty. Per Engine	SPQ	Comment
23517875DDC	23517875	Air Intake Manifold Mounting Gasket - S50/S60 - Single Port, 4-Bolt Hole	EA	3	1	
23521935DDC	23521935	Sealing Ring — Thrust Plate/ Cylinder Head	EA	1	1	
23532333DDC	23532333	Cylinder Head Gasket Set — S60 Non-EGR	EA	1	1	
23536442DDC	23536442	Cylinder Head Gasket Set — S60 EGR	EA	1	1	
23533983DDC	23533983	Exhaust Manifold Gasket — S50/S60	EA	3	1	
23511666DDC	23511666	Exhaust Manifold Gasket — S50/S60	EA	3	1	
FP23506153	23506153	Valve Cover Gasket — Intermediate To Upper Cover Gasket; 98.38" Circumference; Diamond Shaped 0.146" Thick — For 3 PC Cover; Use With OEM # 23505973 Rocker Cover	EA	1	1	
8929803DDC	8929803	Valve Cover Gasket — Lower To Upper Rocker Cover Gasket; 106.68" Circumference; Diamond Shaped 0.146" Thick — For Orange Cover-2 PC; Use With OEM #8929653 Rocker Cover	EA	1	1	
23522269DDC	23522269	Valve Cover Gasket — New Design Rocker Cover-10-Bolt; Black Polyacrylate, Diamond Shaped 0.186" Thick; For 2 PC Cover	EA	1	1	
23511991DDC	23511991	Valve Cover Gasket — S60 (Upper Or Intermediate) — S60: Lower to Upper, 2-Piece Cover, 106.68" Circ.; Diamond Shaped 0.186" Thick; For 2-Piece Cover; Lower To Upper Cover Gasket;	EA	1	1	Use w/O.E. No. 8929653 Rocker Cover
23511992DDC	23511992	Valve Cover Gasket — S60 (Upper To Intermediate) — Intermediate to Upper Rocker Cover Gasket; 98.38" Circ.; Diamond Shaped 0.186" Thick — For 3-Piece Cover	EA	1	1	Use w/O.E. No. 23505973 Rocker Cover
23516322DDC	23516322	Rocker Cover Gasket — S60 — Standard Rocker Cover, Gray Silicone	EA	1	1	

## VALVE TRAIN PARTS

Table 57: Intake Valve Kits

Part No.	OEM No.	Description	UOM	Qty. Per Engine	SPQ	Comment
23501576CDDC	23501576C	Valve Intake Kit — S60	EA	12	1	
23501576DDC	23501576	Valve Intake Kit — S60	EA	12	1	Kit Includes: Valve, Valve Seal, Keeper, Rotocap

Table 58: Exhaust Valve Kits

Part No.	OEM No.	Description	UOM	Qty. Per Engine	SPQ	Comment
23501577DDC	23501577	Valve Exhaust Kit — S60 Pre-1991	EA	12	1	Kit Includes: Valve, Valve Seal, Keeper, Rotocap
23507504DDC	23507504	Valve Exhaust Kit — S60 1991-2001	EA	12	1	Kit Includes: Valve, Valve Seal, Keeper, Rotocap
23507504CDDC	23507504C	Valve Exhaust Kit — S60 Valve & Locks Only	EA	12	1	

Table 59: Valve Guides

Part No.	OEM No.	Description	UOM	Qty. Per Engine	SPQ	Comment
23523930DDC	23523930	Valve Stem Seal	EA	24	1	Kit Includes: Valve, Valve Seal, Keeper, Rotocap



Table 60: Valves

Part No.	OEM No.	Description	UOM	Qty. Per Engine	SPQ
8929573DDC	8929573	Exhaust Valve — Half-Lock S60	EA	48	8
23529596DDC	23529596	Exhaust Valve — S60 (EGR) w/ Verion IV and V Electronics	EA	12	1
8929590DDC	8929590	Exhaust Valve — S60; 300°F Seat; Identification U; 1.5760" Head Dia., 0.3421" Stem Dia., O.A.L. 8.4980"	EA	12	1
23506350DDC	23506350	Exhaust Valve — S60; Identification H	EA	12	2
8929589DDC	8929589	Intake Valve — 30° Seat; 1.7320" Head Dia., 0.3421" Stem Dia., O.A.L. 8.4980"	EA	12	4
23529629DDC	23529629	Intake Valve — S60 w/ Verion IV and V Electronics	EA	12	4

Table 61: Valve Guides

Part No.	OEM No.	Description	UOM	Qty. Per Engine	SPQ
23518572DDC	23518572	Exhaust Valve Guide — S60; Exhaust; 14.43mm - 14.45mm Dia.	EA	24	1
23533552DDC	23533552	Intake & Exhaust Guide — Smooth	EA	24	1
23518571DDC	23518571	Intake & Exhaust Valve Guide — Rifled; Exhaust; 14.30mm-14.32mm Dia.	EA	24	1

## Detroit Diesel Series 60

Table 62: Elements

Part No.	OEM No.	Description	UOM	Qty. Per Engine	SPQ
FP5101760	5101760	Breather Element- 4"	EA	1	1



Table 63: Inserts

Part No.	OEM No.	Description	UOM	Qty. Per Engine	SPQ
8929126.01DDC	8929126.010	Exhaust Valve Insert — 0.010" S60	EA	12	1
8929127.01DDC	8929127.010	Intake Valve Insert — 0.010" S60	EA	12	1

Table 64: Isolator Parts

Part No.	OEM No.	Description	UOM	Qty. Per Engine	SPQ
8929255DDC	8929255	Rocker Cover Bolt Isolator — Up To 1996 — For Use with 1-Piece Rocker Cover	EA	4	1

Table 65: Rocker Buttons

Part No.	OEM No.	Description	UOM	Qty. Per Engine	SPQ
5138643DDC	5138643	Rocker Arm Button Adjustable Screw	EA	30	1

Table 66: Seats

Part No.	OEM No.	Description	UOM	Qty. Per Engine	SPQ
8929126DDC	8929126	Exhaust Valve Seat — (Insert) STD	EA	12	1
8929127DDC	8929127	Intake Valve Seat — (Insert) STD	EA	12	1



Table 67: Hardware

Part No.	OEM No.	Description	UOM	Qty. Per Engine	SPQ
FP23520818	23520818	Intake Valve Adjusting Screw	EA	12	1
8929415DDC	8929415	Exhaust Valve Spring	EA	24	1
23514371DDC	23514371	Arm Adjusting Screw Nut	EA	30	25
8929105DDC	8929105	Rotocoil	EA	24	8

## ENGINE BLOCKS & COMPONENTS

Quality Engine Block parts including Camshafts, Pistons and Oil Coolers.

### ENGINE BLOCK PARTS

Table 68: Sensors

Part No.	OEM No.	Description	UOM	Qty. Per Engine	SPQ
23532797DDC	23532797	Oil Pressure Sensor	EA	1	1
23518092DDC	23518092	Oil Temp Sensor	EA	1	1

Table 69: Related Parts

Part No.	OEM No.	Description	UOM	Qty. Per Engine	SPQ
23511574DDC	23511574	Drain Plug — 1/2" Pipe Thread w/ 1" Square Socket Head	EA	1	25
5117362DDC	5117362	Oil Filler Cap — 2" S60	EA	1	1

Table 70: Gaskets, Rings & Seals

Part No.	OEM No.	Description	UOM	Qty. Per Engine	SPQ
8929740DDC	8929740	Block To Gear Case Seal — 0.134" x 0.074" x 0.480"	EA	1	1
8929318DDC	8929318	Camshaft Thrust Plate Ring Seal — S60	EA	1	6
8929340DDC	8929340	Oil Filter Bypass Seal — Rectangle or Square	EA	1	12
8929341DDC	8929341	Oil Filter Seal — Rectangle or Square	EA	1	1
8929342DDC	8929342	Oil Filter Adapter O-Ring Seal	EA	1	12
23505992DDC	23505992	Oil Filter Gasket — Inlet Tube S60	EA	1	1
8929302DDC	8929302	Oil Filter Tube Adapter Gasket — S50/S60	EA	1	1
23508392DDC	23508392	Oil Cooler Filter Adapter Seal	EA	2	1
8929280DDC	8929280	Oil Cooler Seal — Rectangle or Square	EA	2	12
8929348DDC	8929348	Oil Cooler Core Gasket — S60 Pre-1991	EA	1	1
23506247DDC	23506247	Oil Cooler Core Housing Gasket — S60	EA	1	1
8929289DDC	8929289	Oil Cooler Housing Ring Seal	EA	2	1
8929213DDC	8929213	Oil Fan Spindle Seal — S60	EA	1	1

Part No.	OEM No.	Description	UOM	Qty. Per Engine	SPQ
23530682DDC	23530682	Oil Drain O-Ring	EA		1
5117269DDC	5117269	Oil Pressure (Low Pressure) Regulator Gasket — S60	EA	1	1
23522279DDC	23522279	Oil Pan Assembly Seal — After April 1991 — For Use for Oil Pan w/o Cord; Modified Seal System	EA	1	1
8929102DDC	8929102	Oil Pan Assembly Seal — Before April 1991 - Standard Oil Pan; Gray Silicone	EA	1	1
23513842DDC	23513842	Seal — Copper Washer; Oil Gauge Adapter	EA	1	12
8929130DDC	8929130	Tach Drive Cover Gasket — S50/S60 — Upper Right Rear & Camshaft Access Cover	EA	1	1



Table 71: Hardware

Part No.	OEM No.	Description	UOM	Qty. Per Engine	SPQ
----------	---------	-------------	-----	-----------------	-----

**CHAINS**

FP5113825	5113825	Oil Filler Tube Chain	EA	1	1
-----------	---------	-----------------------	----	---	---

**BOLTS**

11504822DDC	11504822	Bolt - M8 x 1.25" x 30" S60	EA	Varies by application	1
11504571DDC	11504571	Oil Pan Bolt — S60	EA	10	10

**ISOLATORS**

23517242DDC	23517242	Oil Pan Bolt Isolator	EA	10	24
-------------	----------	-----------------------	----	----	----

## Detroit Diesel Series 60

Part No.	OEM No.	Description	UOM	Qty. Per Engine	SPQ
<b>PINS</b>					
FP8929015	8929015	Gear Case Housing Dowel Pin — 16mm Circular	EA	2	1
<b>PLUGS</b>					
8924517DDC	8924517	Socket Head Plug — 3/8" x 18mm Square — For Gear Case Mount	EA	1	1

## CAMSHAFTS & COMPONENTS



Table 72: Hardware

Part No.	OEM No.	Description	UOM	Qty. Per Engine	SPQ
<b>WASHERS</b>					
5111424DDC	5111424	Camshaft Thrust Washer — 7-1/92"	EA		1
5117005DDC	5117005	Thrust Washer — V 7/92" S	EA		4
8926285DDC	8926285	Lockwasher — 1-15/32" ID	EA		25

Table 73: Bearings

Part No.	OEM No.	Description	UOM	Qty. Per Engine	SPQ
FP8929691	8929691	Camshaft Bearing Set — 0.254mm OS	EA	7	1
FP8929692	8929692	Camshaft Bearing Set — 0.508mm OS	EA	7	1
FP8929693	8929693	Camshaft Bearing Set — 0.762mm OS	EA	7	1
8929690DDC	8929690	Camshaft Bearing Set — STD S60	EA	7	1



Table 74: Gaskets, Rings &amp; Seals

Part No.	OEM No.	Description	UOM	Qty. Per Engine	SPQ	Comment
23522975DDC	23522975	Camshaft Cap Seal — Front	EA	2	1	
23528491DDC	23528491	Camshaft O-Ring Seal — Thrust Plate Perimeter	EA	1	1	Gear housing
23521894DDC	23521894	Camshaft Seal — Thrust Plate To Cylinder Head	EA	1	1	

## OIL COOLERS

Table 75: Oil Cooler Cores

Part No.	OEM No.	Description	UOM	Qty. Per Engine	SPQ
FP8547625	8547625	Oil Cooler Core Assembly — 4-Plate	EA	1	1
FP8547626	8547626	Oil Cooler Core Assembly — 8-Plate	EA	1	1

Table 76: Gaskets, Rings &amp; Seals

Part No.	OEM No.	Description	UOM	Qty. Per Engine	SPQ	Comment
MCBS0060DDC	MCBS0060	Oil Cooler Installation Gasket Set — For Cooler with Filter Base	EA	1	1	Set Contains: Gasket and Seals; Applications on 11.1L, 12.7L, and 14.0L Series 60 engines

# ENGINE BRAKES & COMPONENTS

Quality Engine Brake Components for the Series 60.

## TUNE UP KITS

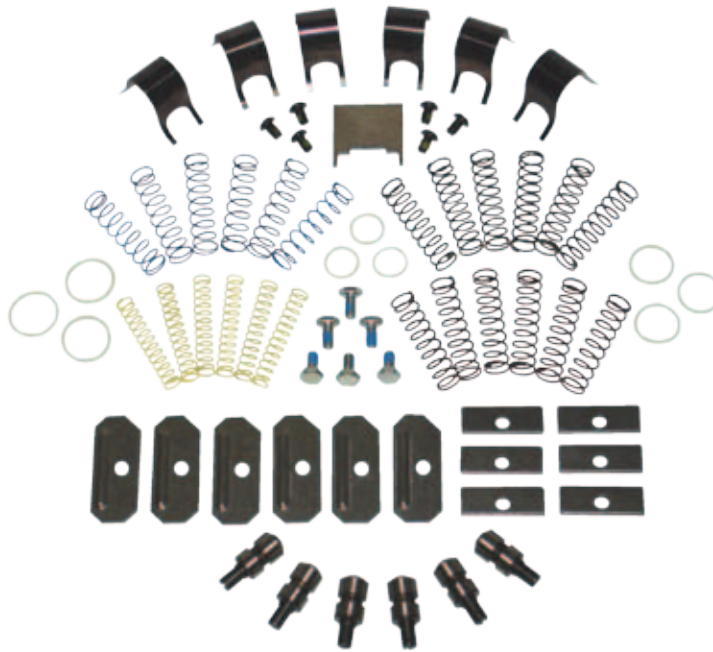


Table 77: Tune Up Kits

Part No.	OEM No.	Description	UOM	Qty. Per Engine	SPQ
14087JCB	143-6479	Tune Up Kit — 346 Series	KIT	1	1

## EXHAUST BRAKES

Table 78: Brake Assemblies

Part No.	OEM No.	Description	UOM	Qty. Per Engine	SPQ
25223JCB		Exhaust Brake Assembly EX3126B	EA	1	1

## ENGINE BRAKE PARTS

Table 79: Pistons

Part No.	OEM No.	Description	UOM	Qty. Per Engine	SPQ
18233JCB		Push Rod Assembly — Slave Piston	KIT	1	1

Table 80: Air Cylinders

Part No.	OEM No.	Description	UOM	Qty. Per Engine	SPQ
28343JCB		Air Cylinder Replacement Group	EA	1	1

Table 81: Solenoids

Part No.	OEM No.	Description	UOM	Qty. Per Engine	SPQ
1024613JCB	1024612	Solenoid — 12VDC S/L H-Blade Pkg	EA	1	1
1024614JCB	1024612	Solenoid — 12VDC S/L V-Blade Pkg	EA	1	1

Table 82: Switches

Part No.	OEM No.	Description	UOM	Qty. Per Engine	SPQ
12246JCB		Clutch Switch	EA	1	1
12261JCB		Clutch Switch Group	EA	1	1
7671JCB		Engine Brake Switch Assembly — Negative Ground	EA	1	1
19229JCB		Exhaust Retarder Assembly	EA	1	1
18188JCB		Switch	EA	1	1

Table 83: Terminals

Part No.	OEM No.	Description	UOM	Qty. Per Engine	SPQ
2299JCB		Assembly Leadout Terminal	EA	1	1

## Detroit Diesel Series 60

Table 84: Housings

Part No.	OEM No.	Description	UOM	Qty. Per Engine	SPQ
1033020JCB		Housing Assembly — 12VDC D/L	EA	1	1

Table 85: Gaskets, Rings & Seals

Part No.	OEM No.	Description	UOM	Qty. Per Engine	SPQ
2411JCB		O-Ring — 0.365" ID x 0.07" W	EA	1	1
1082JCB		Ring Seal — Center	EA	1	1
1083JCB		Ring Seal — Lower	EA	1	1
20229JCB		Ring Seal — Upper	EA	1	1

# FUEL SYSTEM COMPONENTS

Quality Fuel System Components for the Series 60.

## INJECTORS & COMPONENTS



Table 86: Injector Kits

Part No.	OEM No.	Description	UOM	Qty. Per Engine	SPQ
MCBS601NJ		Injector O-Ring Installation Kit	EA		1

Table 87: Gaskets, Rings & Seals

Part No.	OEM No.	Description	UOM	Qty. Per Engine	SPQ	Comment
5104701DDC	5104701	Ring Seal for Injector Tube — Internal Seal	EA	6	1	Part of MCB-S60INJ Seal Kit
23533147DDC	23533147	Injector Sleeve O-Ring Seal	EA	6	1	
23537111DDC	23537111	External Injector Seal Kit — N3	EA	6	1	
23535700DDC	23535700	External Injector Seal Kit — S60 (N3)	EA	6	1	
23511870DDC	23511870	Lower Auxillary Injector Gasket	EA	6	6	

Table 88: Injectors - New

Part No.	OEM No.	Description	UOM	Qty. Per Engine	SPQ
5230001DDC	5230001	Injector Repair Kit — S60	EA		1

## Detroit Diesel Series 60

Table 89: Injectors - Reman

Part No.	OEM No.	Description	UOM	Qty. Per Engine	SPQ
5236977DDCR	5236977R	Reman Electronic Injector	EA	6	1
5235915DDCR	5235915R	Reman Electronic Injector — S50/S60	EA	6	1
5237045DDCR	5237045R	Reman Fuel Injector Electric Unit Assembly S60: Tractor M915A3	EA	6	1
5236347DDCR	5236347R	Reman Injector	EA	6	1
5236978DDCR	5236978R	Reman Injector S50/S60	EA	6	1
5235605DDCR	5235605R	Reman Injector S60	EA	6	1
5234870DDCR	5234870R	Reman Injector S60 11.1L	EA	6	1
5234935DDCR	5234935R	Reman Injector S60 11.1L	EA	6	1
5235580DDCR	5235580R	Reman Injector S60 11.1L DDEC 3/4"	EA	6	1
5234940DDCR	5234940R	Reman Injector S60 11.1L,12.7L	EA	6	1
5234795DDCR	5234795R	Reman Injector S60 12.7L	EA	6	1
5228773DDCR	5228773R	Reman Injector	EA	6	1
5237014DDCR	5237014R	Reman Injector	EA	6	1
5235575DDCR	5235575R	Reman Injector S50/S60 12.7L	EA	6	1
5237466DDCR	5237466R	Reman Injector S60	EA	6	1
5237635DDCR	5237635R	Reman Injector Series 60	EA	6	1
5237650DDCR	5237650R	Reman Injector S60	EA	6	1

Table 90: Injector Tubes

Part No.	OEM No.	Description	UOM	Qty. Per Engine	SPQ
23534745DDC	23534745	Injector Tube E3 — Stainless Steel — DDEC-VI	EA		1

Table 91: Hardware

Part No.	OEM No.	Description	UOM	Qty. Per Engine	SPQ
<b>BOLTS</b>					
8929393DDC	8929393	Injector Clamp Bolt — M10 x 1.5mm x 70.0mm, S60 (Series 12.7)	EA	6	1

## FUEL PUMPS & COMPONENTS

Table 92: Fuel Pumps

Part No.	OEM No.	Description	UOM	Qty. Per Engine	SPQ
23517845DDCR	23517845	Fuel Pump — Late Style — S60	EA	1	1

Table 93: Couplings

Part No.	OEM No.	Description	UOM	Qty. Per Engine	SPQ
FP8929787	8929787	Fuel Pump Coupling; 15.875mm ID	EA	1	1
FP8929479	8929479	Fuel Pump Drive Coupling — For STD Capacity Fuel Pump	EA	1	1
23505249DDC	23505249	Fuel Pump Drive Coupling (Spider) — For High Capacity Fuel Pump	EA	1	1

Table 94: Fuel Pump Drives

Part No.	OEM No.	Description	UOM	Qty. Per Engine	SPQ
FP23506558	23506558	Fuel Pump Drive — High Capacity Pump	EA	1	1
FP23511964	23511964	Fuel Pump Drive — Standard Capacity Pump	EA	1	1

Table 95: Fuel Pump Drive Shafts

Part No.	OEM No.	Description	UOM	Qty. Per Engine	SPQ
23506549DDC	23506549	Fuel Pump Drive Shaft — S60	EA	1	1
FP23506545	23506545	Fuel Pump Drive Shaft	EA	1	1

Table 96: Gears

Part No.	OEM No.	Description	UOM	Qty. Per Engine	SPQ
FP23511959	23511959	Fuel Pump Drive Gear — 0.275"	EA	1	1
23506546DDC	23506546	Fuel Pump Drive Gear — 0.375" S60	EA	1	1

## Detroit Diesel Series 60

Table 97: Hubs

Part No.	OEM No.	Description	UOM	Qty. Per Engine	SPQ
FP8929480	8929480	Fuel Pump Hub — 12.70mm ID	EA	1	1

Table 98: Switches

Part No.	OEM No.	Description	UOM	Qty. Per Engine	SPQ
23520025DDC	23520025	Fuel/ Oil Pressure Switch	EA	1	1

Table 99: Valves

Part No.	OEM No.	Description	UOM	Qty. Per Engine	SPQ
23506563DDC	23506563	Fuel Pump Check Valve Kit — S60	EA	1	1
23516918DDC	A23516918	Fuel Check Valve — S60, 3/8" Male	EA	6	1
23516993DDC	23516993	Fuel Check Valve — 3/8" NPTF Female, #6 Stainless Steel	EA	1	1
8923528DDC	8923528	Fuel Pump Injector Check Valve — S60	EA	1	1
23516919DDC	23516919	Fuel Check Valve — 3/8" NPTF Female #8 Stainless Steel	EA	1	1

Table 100: Bearings

Part No.	OEM No.	Description	UOM	Qty. Per Engine	SPQ
8923526DDC	8923526	Fuel Pump Shaft Cylindrical Bearing — S60	EA	1	1

Table 101: Gaskets, Rings & Seals

Part No.	OEM No.	Description	UOM	Qty. Per Engine	SPQ
5234699KDDC	5234699	Complete Lower Injector O-Ring Kit	EA	2	1
23532850DDC	23532850	Bypass Filter Adapter Seal Ring	EA		1
8929253DDC	8929253	Fuel Pump Drive Cover Ring Seal — 0.139" x 4.484" ID	EA	1	1



Part No.	OEM No.	Description	UOM	Qty. Per Engine	SPQ
5150193DDC	5150193	Fuel Pump Drive Gasket	EA	1	1
23505248DDC	23505248	Fuel Pump Mounting Gasket — S50/S60	EA	1	1
23506556DDC	23506556	Fuel Pump Relief Valve Ring Seal — S60	EA	1	12
23524657DDC	23524657	Fuel/ Water Separator O-Ring	EA	1	12
5234699DDC	5234699	Injector O-Ring — External (Lower)	EA	2	6
5234702DDC	5234702	Injector O-Ring — External (Upper)	EA	1	6
23501580DDC	23501580	Injector Tube Hole Kit — w/ Seal, S60	EA	6	6
23515470DDC	23515470	Injector Tube Hole Ring Seal — Green Fluorocarbon	EA	6	12

Table 102: Hardware

Part No.	OEM No.	Description	UOM	Qty. Per Engine	SPQ
<b>CAPS</b>					
23506555DDC	23506555	Fuel Pump Relief Valve Cap — S60	EA	1	1
<b>PINS</b>					
23506564DDC	23506564	Relief Valve Shear Pin — S60	EA	1	1
<b>PLUGS</b>					
23506553DDC	23506553	Fuel Pump Body Plug — S60	EA	1	25
<b>SCREWS</b>					
FP23520820	23520820	Adjusting Injector Screw	EA	6	1
<b>SPACERS</b>					
23506560DDC	23506560	Fuel Pump Relief Valve Spacer — S60	EA	1	1
<b>SPRINGS</b>					
23506557DDC	23506557	Fuel Pump Relief Valve Spring — S60	EA	1	1

# ENGINE PARTS

## RELATED PARTS

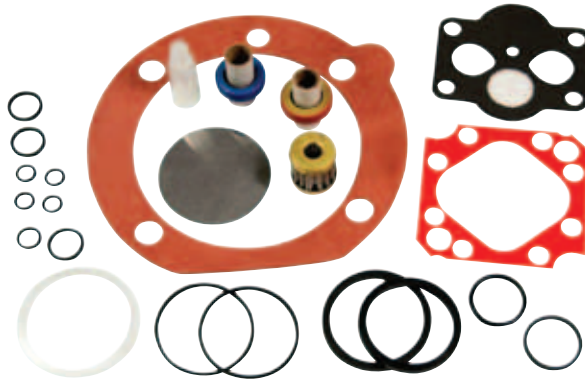


Table 103: Gaskets, Rings & Seals

Part No.	OEM No.	Description	UOM	SPQ	Comment
1082JCB		Ring Seal — Center	EA	1	
1083JCB		Ring Seal — Lower	EA	1	
19594JCB	19594	Turbocharger Gasket	EA	1	
20229JCB		Ring Seal — Upper	EA	1	
23501544DDC	23501544	Crankshaft Rear Seal — S60 built after May 1999	EA	1	
23501580DDC	23501580	Injector Tube Hole Kit — w/ Seal, S60	EA	6	
23503747DDC	23503747	Piston Ring Set — S60 2.55mm Top, STD	EA	1	
23505024DDC	23505024	Water Pump Cover Seal Ring — S60 — 4.218" OD; Rectangle or square seal	EA	12	
23505248DDC	23505248	Fuel Pump Mounting Gasket — S50/S60	EA	1	
23505891DDC	23505891	Oil Pump O-Ring Seal — Outlet	EA	1	
23505892DDC	23505892	Oil Pump O-Ring Seal — Inlet	EA	1	
23505902DDC	23505902	Bypass Oil Filter Seal	EA	5	
23505992DDC	23505992	Oil Filter Gasket — Inlet Tube S60	EA	1	
23506247DDC	23506247	Oil Cooler Core Housing Gasket — S60	EA	1	
23506556DDC	23506556	Fuel Pump Relief Valve Ring Seal — S60	EA	12	
23507073DDC	23507073	Water Pump Gasket — S60	EA	1	
23508392DDC	23508392	Oil Cooler Filter Adapter Seal	EA	1	
23508408DDC	23508408	Turbocharger Seal	EA	4	
23511666DDC	23511666	Exhaust Manifold Gasket — S50/S60	EA	1	
23511746DDC	23511746	Accessory Drive Retaining Ring — For Accessory Drive	EA	1	

Part No.	OEM No.	Description	UOM	SPQ	Comment
23511870DDC	23511870	Lower Auxillary Injector Gasket	EA	6	
23511991DDC	23511991	Valve Cover Gasket — S60 (Upper Or Intermediate) — S60: Lower to Upper, 2-Piece Cover, 106.68" Circ.; Diamond Shaped 0.186" Thick; For 2-Piece Cover; Lower To Upper Cover Gasket;	EA	1	Use w/O.E. No. 8929653 rocker cover
23511992DDC	23511992	Valve Cover Gasket — S60 (Upper To Intermediate) — Intermediate to Upper Rocker Cover Gasket; 98.38" Circ.; Diamond Shaped 0.186" Thick — For 3-Piece Cover	EA	1	Use w/O.E. No. 23505973 rocker cover
23512048DDC	23512048	Water Pump Cover O-Ring; 4.77" OD — For Gear Case Mounted Pumps	EA	1	
23512691MCBDDC		Complete Overhaul Gasket Set — S60 w/o Rocker Cover Gasket	EA	1	Crankshaft Seals Not Included
23513559DDCR	23513559	Timing Bull Gear and Hub Assembly — S60 Late Style	EA	1	
23513578DDC	23513578	Seal & Sleeve Rear Crank Assembly — Double Lip Wrap-Around	EA	1	
23513842DDC	23513842	Seal — Copper Washer; Oil Gauge Adapter	EA	12	
23515470DDC	23515470	Injector Tube Hole Ring Seal — Green Fluorocarbon	EA	12	
23516100DDC	23516100	Power Steering Pump Gasket	EA	1	
23516322DDC	23516322	Rocker Cover Gasket — S60 — Standard Rocker Cover, Gray Silicone	EA	1	
23516969DDC	23516969	Crankshaft Seal & Sleeve Assembly, Rear — Detroit Diesel — 4S, Teflon Lip	EA	1	
23517875DDC	23517875	Air Intake Manifold Mounting Gasket - S50/S60 - Single Throat, 4-Bolt Hole	EA	1	
23518355DDC	23518355	Crankshaft Seal — Front	EA	1	
23519651DDC		Crankshaft Seal — Rear	EA	1	
23520377DDC	23520377	Water Pump O-Ring Seal — For Gear Case Mounted Pumps	EA	1	
23521894DDC	23521894	Camshaft Seal — Thrust Plate To Cylinder Head	EA	1	
23521935DDC	23521935	Sealing Ring — Thrust Plate/ Cylinder Head	EA	1	
23522269DDC	23522269	Valve Cover Gasket — New Design Rocker Cover-10-Bolt; Black Polyacrylate, Diamond Shaped 0.186" Thick; For 2 PC Cover	EA	1	

## Detroit Diesel Series 60

Part No.	OEM No.	Description	UOM	SPQ	Comment
23522279DDC	23522279	Oil Pan Assembly Seal — After April 1991 — For Use for Oil Pan w/o Cord; Modified Seal System	EA	1	
23522975DDC	23522975	Camshaft Cap Seal — Front	EA	1	
23524657DDC	23524657	Fuel/ Water Separator O-Ring	EA	12	
23528491DDC	23528491	Camshaft O-Ring Seal — Thrust Plate Perimeter	EA	1	Gear housing
23530682DDC	23530682	Oil Drain O-Ring	EA	1	
23531251DDC	23531251	Piston Ring Set — S60 3.0mm Top	EA	1	
23531252DDC	23531252	Piston Ring Set — S60 14L	EA	1	
23532850DDC	23532850	Bypass Filter Adapter Seal Ring	EA	1	
23533147DDC	23533147	Injector Sleeve O-Ring Seal	EA	1	
23533983DDC	23533983	Exhaust Manifold Gasket — S50/S60	EA	1	
23535700DDC	23535700	External Injector Seal Kit — S60 (N3)	EA	1	
23536443DDC		Complete Overhaul Gasket Set — S60 DDEC V EGR	EA	1	
23537111DDC	23537111	External Injector Seal Kit — N3	EA	1	
2411JCB		O-Ring — 0.365" ID x 0.07" W	EA	1	
5103951DDC	5103951	Fan Shaft Seal	EA	1	
5104701DDC	5104701	Ring Seal for Injector Tube — Internal Seal	EA	1	Part of MCBS60INJ Seal Kit
5117269DDC	5117269	Oil Pressure (Low Pressure) Regulator Gasket — S60	EA	1	
5132155DDC	5132155	Thermostat Seal	EA	6	
5141452DDC	5141452	Gear Case Cover O-Ring	EA	1	
5150193DDC	5150193	Fuel Pump Drive Gasket	EA	1	
5234699DDC	5234699	Injector O-Ring — External (Lower)	EA	6	
5234699KDDC	5234699	Complete Lower Injector O-Ring Kit	EA	1	
5234702DDC	5234702	Injector O-Ring — External (Upper)	EA	6	
8922407DDC	A8922407	Fresh Water Pump Cover Retaining Ring — S60	EA	1	
8922740DDC	8922740	Low Pressure Regulator Valve	EA	1	
8929013DDC	8929013	Cylinder Liner Crevice Seal	EA	6	
8929062DDC	8929062	Accessory Drive Ring Lock S60 — For Air Compressor	EA	1	
8929102DDC	8929102	Oil Pan Assembly Seal — Before April 1991 - Standard Oil Pan; Gray Silicone	EA	1	

Part No.	OEM No.	Description	UOM	SPQ	Comment
8929130DDC	8929130	Tach Drive Cover Gasket — S50/S60 — Upper Right Rear & Camshaft Access Cover	EA	1	
8929134DDC	8929134	Water Pump Seal-Lip Type S60	EA	1	
8929158DDC	8929158	Water Pump Ring Seal — For Front Mounted Pumps	EA	1	
8929168DDCR	8929168	Timing Bull Gear and Hub Assembly — S60 Early Style	EA	1	
8929176DDC	8929176	Cylinder Liner D-Ring Seal	EA	1	
8929213DDC	8929213	Oil Fan Spindle Seal — S60	EA	1	
8929216DDC	8929216	Accessory Drive Retaining Ring — S60; 1.618"OD	EA	1	
8929253DDC	8929253	Fuel Pump Drive Cover Ring Seal — 0.139" x 4.484" ID	EA	1	Fuel cover; 0.139" x 4.609" ID
8929280DDC	8929280	Oil Cooler Seal — Rectangle or Square	EA	12	
8929285DDC	8929285	Turbocharger Oil Drain/ Return Gasket — S50/S60	EA	1	
8929289DDC	8929289	Oil Cooler Housing Ring Seal	EA	1	
8929299DDC	8929299	Air Compressor Drive Housing Gasket	EA	1	
8929302DDC	8929302	Oil Filter Tube Adapter Gasket — S50/S60	EA	1	
8929318DDC	8929318	Camshaft Thrust Plate Ring Seal — S60	EA	6	
8929340DDC	8929340	Oil Filter Bypass Seal — Rectangle or Square	EA	12	
8929341DDC	8929341	Oil Filter Seal — Rectangle or Square	EA	1	
8929342DDC	8929342	Oil Filter Adapter O-Ring Seal	EA	12	
8929344DDC	8929344	Oil Pump to Block Inlet Gasket	EA	1	
8929347DDC	8929347	Oil Pump Outlet Gasket (To Block)	EA	1	
8929348DDC	8929348	Oil Cooler Core Gasket — S60 Pre-1991	EA	1	
8929427DDC	8929427	Water Pump Retainer — Bearing & Seal S60	EA	1	
8929510DDC	8929510	Water Pump Cover Ring Seal — Front Mounted Pumps	EA	6	
8929529DDC	8929529	Turbocharger Mounting Gasket — S50/S60; Exhaust-Inlet Connection	EA	1	
8929672DDC	8929672A	Main Bearing Pair — 0.508mm (0.020")	EA	1	
8929740DDC	8929740	Block To Gear Case Seal — 0.134" x 0.074" x 0.480"	EA	1	
8929803DDC	8929803	Valve Cover Gasket — Lower To Upper Rocker Cover Gasket; 106.68" Circumference; Diamond Shaped 0.146" Thick — For Orange Cover-2 PC; Use With OEM #8929653 Rocker Cover	EA	1	

## Detroit Diesel Series 60

DETROIT DIESEL  
SERIES 60

Part No.	OEM No.	Description	UOM	SPQ	Comment
FP23505643	23505643	Accessory Drive Lock Ring — For Power Steering Pump	EA	1	
FP23506153	23506153	Valve Cover Gasket — Intermediate To Upper Cover Gasket; 98.38" Circumference; Diamond Shaped 0.146" Thick — For 3 PC Cover; Use With OEM # 23505973 Rocker Cover	EA		
FP23509105	23509105	Water Pump Overhaul Kit	EA	1	
FP23509204	23509204	Accessory Drive Lock Ring	EA	1	
FP23522433	23522433	Water Pump Seal — Unitized	EA	1	
FP8929063	8929063	Retaining Ring; 3.734" OD — For Fan Drive	EA	1	
FP8929064	8929064	Snap Ring — 3.121" OD — For Accessory Drive	EA	1	
FP8929673A	8929673A	Main Bearing Pair — 0.762mm (0.030")	EA	1	
FP9411502	9411502	Mechanical Governor Retaining Ring	EA	1	
MCBS0060DDC	MCBS0060	Oil Cooler Installation Gasket Set — For Cooler with Filter Base	EA	1	Set Contains: Gasket and Seals; Applications on 11.1L, 12.7L, and 14.0L Series 60 Engines
S601NJMCBDDC		O-Ring Kit	EA	1	



Table 104: Hardware

Part No.	OEM No.	Description	UOM	Qty. Per Engine	SPQ	Comment
<b>BOLTS</b>						
11504571DDC	11504571	Oil Pan Bolt — S60	EA		10	
11504822DDC	11504822	Bolt - M8 x 1.25" x 30" S60	EA		1	
5103534DDC	5103534	Lock Bolt for Idler Gear — 5/16"-24 x 1/2" (Vibra-Tite Coated)	EA		25	One time use; Do not reuse
5148373DDC	5148373	Piston Pin Bolt — 7/16" x 2" x 12" Point	EA		25	
8929337DDC	8929337	Piston Pin Bolt — S60	EA		10	
8929357DDC	8929357	Manifold To Head Exhaust Bolt — S60	EA		1	
8929448DDC	8929448	Idler Gear Assembly Bolt — S60	EA		1	
FP8929355	8929355	Connecting Rod Bolt	EA		1	
MCB60HBK	23530768	Cylinder Head Bolt Kit — S60 (1EA=38PC)	EA		1	
8929393DDC	8929393	Injector Clamp Bolt — M10 x 1.5mm x 70.0mm, S60 (Series 12.7)	EA		1	
<b>BUSHINGS</b>						
FP23502879	23502879	Isolator Bushing — DDECIII	EA		1	
23512307DDC	23512307	Engine Control Module (ECM) Mounting Isolator Bushings — DDECIII	EA		1	
<b>CAPS</b>						
23506555DDC	23506555	Fuel Pump Relief Valve Cap — S60	EA		1	

## Detroit Diesel Series 60

Part No.	OEM No.	Description	UOM	Qty. Per Engine	SPQ	Comment
<b>ISOLATORS</b>						
23517242DDC	23517242	Oil Pan Bolt Isolator	EA		24	
23517911DDC	23517911	Rocker Cover Isolator Assembly — For Use with 2-Piece Rocker Cover	EA		10	
23517912DDC	23517912	Rocker Cover Bolt Isolator — For Use with 1-Piece Rocker Cover	EA		1	
<b>NUTS</b>						
23514371DDC	23514371	Arm Adjusting Screw Nut	EA		25	
8929019DDC	8929019	Connecting Rod Nut	EA		1	
FP11509584	11509584	Water Pump Lock Nut	EA		1	
<b>PINS</b>						
23506564DDC	23506564	Relief Valve Shear Pin — S60	EA		1	
141346DDC	141346	Dowel Pin — 3/16" x 1/2"	EA		4	
5147345DDC	5147345	Governor Control Link Pin	EA		1	
FP8929015	8929015	Gear Case Housing Dowel Pin — 16mm Circular	EA		1	
<b>PLUGS</b>						
23511574DDC	23511574	Drain Plug — 1/2" Pipe Thread w/ 1" Square Socket Head	EA		25	
23506553DDC	23506553	Fuel Pump Body Plug — S60	EA		25	
8923313DDC	8923313	Pipe/ Freeze/ Block Plug — 3/4" x 14mm Square Socket	EA		25	
8924517DDC	8924517	Socket Head Plug — 3/8" x 18mm Square — For Gear Case Mount	EA		1	
8926993DDC	8926993	Cylinder Head Pipe or Freeze Plug — 1/4" x 18mm; Recessed Socket Head	EA		10	
<b>RETAINERS</b>						
23521781DDC	23521781	Piston Pin Retainer — S60	EA		1	
5188405DDC	5188405	Piston Pin Retainer	EA		1	
5180250DDC	5180250	Piston Pin Retainer	EA		1	
<b>ROTOCOILS</b>						
8929105DDC	8929105	Rotocoil	EA		8	



Part No.	OEM No.	Description	UOM	Qty. Per Engine	SPQ	Comment
<b>SCREWS</b>						
FP23520818	23520818	Intake Valve Adjusting Screw	EA		1	
FP23520820	23520820	Adjusting Injector Screw	EA		1	
<b>SPACERS</b>						
23506560DDC	23506560	Fuel Pump Relief Valve Spacer — S60	EA		1	
<b>SPRING/ RETAINER KITS</b>						
23528939DDC	23528939	Follower Spring & Retainer Kit	EA		1	
<b>SPRINGS</b>						
23506557DDC	23506557	Fuel Pump Relief Valve Spring — S60	EA		1	
5155765DDC	5155765	Oil Press Relief Valve Spring	EA		1	
5177778DDC	5177778	Oil Cooler Bypass Valve Spring	EA		1	
<b>STUDS</b>						
23507438DDC	23507438	Exhaust Manifold Stud — Manifold To Turbo; M10 x 1.5 x 44.0mm	EA		1	
8929425DDC	8929425	Exhaust Manifold Stud — S60; Manifold To Turbo; M10 x 1.5 x 50.0mm	EA		4	
<b>WASHERS</b>						
5104439DDC	5104439	Exhaust Manifold Washer — 7/16"	EA		25	
23530554DDC	23530554	Thrust Washer — Front S60	EA		2	ESN 06R0762049
23530555DDC	23530555	Thrust Washer — Rear S60	EA		2	
5111424DDC	5111424	Camshaft Thrust Washer — 7-1/92"	EA		1	
5116197DDC	5116197	Thrust Washer 53 STD	EA		4	
5117005DDC	5117005	Thrust Washer — V 7/92" S	EA		4	
8926285DDC	8926285	Lockwasher — 1-15/32" ID	EA		25	
5133981DDC	5133981	Vibration Damper Washer — 19/32"	EA		25	
8929085DDC	8929085	Thrust Washer — STD, S60 — Upper Position	EA		2	
8929328DDC	8929328	Cylinder Head Bolt Washer	EA		25	
FP8929085S	8929085S	Thrust Washer Set — Upper Position	EA		1	
FP8929697	8929697	Thrust Washer — Upper 0.127mm Oversize — Upper Position	EA		1	
FP8929698	8929698	Thrust Washer — Upper 0.254mm Oversize — Upper Position	EA		1	

# NATURAL GAS ENGINE COMPONENTS

Quality Natural Gas Engine Components for the Series 60.

## AIR INTAKE

Table 105: Spark Plugs

Part No.	OEM No.	Description	UOM	Qty. Per Engine	SPQ
FP23515946	23515946	Spark Plug — Natural Gas Engines	EA	6	1

# CROSS REFERENCE

Table 106: OEM/ MFR Cross Reference

OEM/ MFR No.	Part No.	Page No.
1024612	1024613JCB	43
1024612	1024614JCB	43
1024613	1024613JCB	43
1033020	1033020JCB	44
107622	107622BXR	14
107622X	107622BXR	14
107622XM1DRMAN	107622BXR	14
107623	107623BXR	14
107623X	107623BXR	14
1082	1082JCB	44
1083	1083JCB	44
109429XM1DRMAN	5004188BXR	14
109430XM1DRMAN	5004187BXR	14
11504571	11504571DDC	39
11504822	11504822DDC	39
11509584	FP11509584	20
12246	12246JCB	43
12261	12261JCB	43
14087	14087JCB	42
141346	141346DDC	29
1436455	12246JCB	43
143-6455	12246JCB	43
1436456	12261JCB	43
143-6456	12261JCB	43
1436479	14087JCB	42
143-6479	14087JCB	42
1436590	18233JCB	43
143-6590	18233JCB	43
1436642	20229JCB	44
143-6642	20229JCB	44
148-2558	1024613JCB	43
1564162	25223JCB	42
156-4162	25223JCB	42

OEM/ MFR No.	Part No.	Page No.
1631547	1024614JCB	43
163-1547	1024614JCB	43
1631550	1024613JCB	43
163-1550	1024613JCB	43
172743	172743BWT	13
1779601	28343JCB	43
177-9601	28343JCB	43
18188	18188JCB	43
18233	18233JCB	43
19229	19229JCB	43
19594	19594JCB	14
1FKS60SPREM	FP1FKS60SPREM	8
1FS605	MC1FS605DDC	8
1Q9830	18188JCB	43
1Q-9830	18188JCB	43
20229	20229JCB	44
2299	2299JCB	43
23501544	23501544DDC	22
23501576	23501576DDC	34
23501576C	23501576CDDC	34
23501577	23501577DDC	34
23501580	23501580DDC	49
23502879	FP23502879	11
23503535	FP23503535	11
23503704	23503704DDC	11
23503707	23503707DDC	22
23503747	23503747DDC	30
23503825	23503825DDC	17
23503826	23503826DDC	17
23503827	23503827DDC	17
23504966	23504966DDC	13
23505024	23505024DDC	20
23505248	23505248DDC	49
23505249	23505249DDC	47
23505643	FP23505643	12
23505886	23505886DDC	24
23505891	23505891DDC	24

## Detroit Diesel Series 60

OEM/ MFR No.	Part No.	Page No.
23505892	23505892DDC	24
23505895	RW4122PXM1DRMAN	18
23505895	RW4122RXM1D	18
23505896	23505896DDC	19
23505902	23505902DDC	50
23505992	23505992DDC	38
23506153	FP23506153	33
23506247	23506247DDC	38
23506325	23506325DDC	16
23506350	23506350DDC	35
23506545	FP23506545	47
23506546	23506546DDC	47
23506549	23506549DDC	47
23506553	23506553DDC	49
23506555	23506555DDC	49
23506556	23506556DDC	49
23506557	23506557DDC	49
23506558	FP23506558	47
23506560	23506560DDC	49
23506563	23506563DDC	48
23506564	23506564DDC	49
23507073	23507073DDC	20
23507438	23507438DDC	32
23507504	23507504DDC	34
23507504C	23507504CDDC	34
23508392	23508392DDC	38
23508408	23508408DDC	14
23508410	23508410DDC	13
23509067	RW1160XM1DRMAN	18
23509105	FP23509105	17
23509203	FP23509203	11
23509204	FP23509204	12
23511362	23511362DDCR	31
23511574	23511574DDC	38
23511666	23511666DDC	33
23511745	23511745DDC	11
23511746	23511746DDC	11

OEM/ MFR No.	Part No.	Page No.
23511870	23511870DDC	45
23511959	FP23511959	47
23511964	FP23511964	47
23511991	23511991DDC	33
23511992	23511992DDC	33
23512048	23512048DDC	20
23512307	23512307DDC	11
23513559	23513559DDCR	21
23513578	23513578DDC	23
23513842	23513842DDC	39
23514371	23514371DDC	37
23514708	23514708DDC	16
23515145	23515145DDC	15
23515470	23515470DDC	49
23515581	23515581DDC	28
23515582	23515582DDC	28
23515597	FP23515597	21
23515635	23515635MDDC	13
23515946	FP23515946	58
23516100	23516100DDC	12
23516322	23516322DDC	33
23516919	23516919DDC	48
23516969	23516969DDC	23
23516993	23516993DDC	48
23517242	23517242DDC	39
23517845	23517845DDCR	47
23517875	23517875DDC	33
23517911	23517911DDC	32
23517912	23517912DDC	32
23517973	23517973DDC	20
23518092	23518092DDC	38
2351817	23518178DDC	11
23518355	23518355DDC	22
23518571	23518571DDC	35
23518572	23518572DDC	35
23518588	23518588DDC	13
23518588	23518588MDDC	13

OEM/ MFR No.	Part No.	Page No.
23520025	23520025DDC	48
23520136	RW4122PXM1DRMAN	18
23520136	RW4122RXM1D	18
23520377	23520377DDC	20
23520818	FP23520818	37
23520820	FP23520820	49
23521781	23521781DDC	30
23521894	23521894DDC	41
23521935	23521935DDC	33
23522269	23522269DDC	33
23522279	23522279DDC	39
23522433	FP23522433	20
23522495	FP23522495	29
23522707	23522707DDC	18
23522707	RW4123PRXM1DRMN	18
23522707	RW4123PXM1DRMAN	18
23522707	RW4123XM1DRMAN	18
23522721	RW4125PXM1DRMAN	18
23522975	23522975DDC	41
23523930	23523930DDC	34
23524657	23524657DDC	49
23525500	23525500DDC	27
23525566	23525566DDCR	31
23525566HG	23525566HGDDCR	31
23526039	23526039DDC	18
23526141	23526141DDC	28
23526142	23526142DDC	28
23527225	23527225DDC	21
23527914	23527914DDC	22
23528065	23528065DDC	13
23528491	23528491DDC	41
23528493	23528493DDC	29
23528939	23528939DDC	32
23529596	23529596DDC	35
23529629	23529629DDC	35
23530554	23530554DDC	23
23530555	23530555DDC	23

OEM/ MFR No.	Part No.	Page No.
23530665	23530665DDC	26
23530682	23530682DDC	39
23530768	MCB60HBK	32
23531249	23531249DDC	27
23531250	23531250DDC	27
23531251	23531251DDC	30
23531252	23531252DDC	28
23531254	23531254DDCR	31
23531257	RW4124XM1DRMAN	18
23531604	23531604DDC	22
23531605	23531605DDC	22
23531606	23531606DDC	22
23532307	23532307DDC	9
23532333	23532333DDC	33
23532436	23532436DDC	17
23532555	23532555DDC	26
23532557	23532557DDC	26
23532558	23532558DDC	26
23532561	23532561DDC	26
23532562	23532562DDC	26
23532565	23532565DDC	9
23532574	23532574DDC	9
23532577	23532577DDC	9
23532590	23532590DDC	26
23532797	23532797DDC	38
23532850	23532850DDC	48
23533147	23533147DDC	45
23533552	23533552DDC	35
23533690	23533690DDCR	31
23533692	23533692DDC	22
23533983	23533983DDC	33
23534745	23534745DDC	46
23535280	23535280DDC	22
23535700	23535700DDC	45
23536442	23536442DDC	33
23537081	23537081DDC	9
23537111	23537111DDC	45

## Detroit Diesel Series 60

OEM/ MFR No.	Part No.	Page No.
23538858	23538858DDCR	31
2411	2411JCB	44
2420840	1033020JCB	44
242-0840	1033020JCB	44
25223	25223JCB	42
28343	28343JCB	43
2U1492	1082JCB	44
2U-1492	1082JCB	44
2U1493	1083JCB	44
2U-1493	1083JCB	44
316GC1210A	FP316GC1210A	18
5101760	FP5101760	36
5103534	5103534DDC	23
5103646	5103646DDC	28
5103951	5103951DDC	16
5104439	5104439DDC	32
5104701	5104701DDC	45
5111424	5111424DDC	40
5113825	FP5113825	39
5116197	5116197DDC	23
5117005	5117005DDC	40
5117269	5117269DDC	39
5117362	5117362DDC	38
5126327	5126327DDC	25
5127978	FP5127978	24
5132155	5132155DDC	17
5133981	5133981DDC	23
5138643	5138643DDC	36
5141452	5141452DDC	22
5147345	5147345DDC	23
5148373	5148373DDC	29
5149572	5149572DDC	28
5149575	5149575DDC	28
5149577	5149577DDC	28
5149877	5149877DDC	31
5150193	5150193DDC	49
5155765	5155765DDC	25

OEM/ MFR No.	Part No.	Page No.
5177778	5177778DDC	25
5180250	5180250DDC	30
5188405	5188405DDC	29
5199569	5199569DDC	27
5228773R	5228773DDCR	46
5230001	5230001DDC	45
5234699	5234699DDC	49
5234699	5234699KDDC	48
5234702	5234702DDC	49
5234795R	5234795DDCR	46
5234870R	5234870DDCR	46
5234935R	5234935DDCR	46
5234940R	5234940DDCR	46
5235575R	5235575DDCR	46
5235580R	5235580DDCR	46
5235605R	5235605DDCR	46
5235915R	5235915DDCR	46
5236347R	5236347DDCR	46
5236977R	5236977DDCR	46
5236978R	5236978DDCR	46
5237014R	5237014DDCR	46
5237045R	5237045DDCR	46
5237466R	5237466DDCR	46
5237635R	5237635DDCR	46
5237650R	5237650DDCR	46
7671	7671JCB	43
7C0031	2411JCB	44
7C-0031	2411JCB	44
8547625	FP8547625	41
8547626	FP8547626	41
8922383	8922383DDC	19
8922740	8922740DDC	24
8923313	8923313DDC	32
8923526	8923526DDC	48
8923528	8923528DDC	48
8924517	8924517DDC	40
8926285	8926285DDC	40

OEM/ MFR No.	Part No.	Page No.
8926993	8926993DDC	32
8929013	8929013DDC	28
8929015	FP8929015	40
8929019	8929019DDC	29
8929024	8929024DDC	11
8929062	8929062DDC	12
8929063	FP8929063	20
8929064	FP8929064	12
8929085	8929085DDC	23
8929085S	FP8929085S	23
8929102	8929102DDC	39
8929105	8929105DDC	37
8929126	8929126DDC	37
8929126.010	8929126.01DDC	36
8929127	8929127DDC	37
8929127.010	8929127.01DDC	36
8929130	8929130DDC	39
8929134	8929134DDC	20
8929157	FP8929157	19
8929158	8929158DDC	20
8929168	8929168DDCR	21
8929176	8929176DDC	28
8929213	8929213DDC	38
8929216	8929216DDC	12
8929253	8929253DDC	48
8929255	8929255DDC	36
8929280	8929280DDC	38
8929285	8929285DDC	14
8929289	8929289DDC	38
8929299	8929299DDC	15
8929302	8929302DDC	38
8929318	8929318DDC	38
8929328	8929328DDC	32
8929334	FP8929334	19
8929337	8929337DDC	29
8929340	8929340DDC	38
8929341	8929341DDC	38

OEM/ MFR No.	Part No.	Page No.
8929342	8929342DDC	38
8929344	8929344DDC	24
8929347	8929347DDC	24
8929348	8929348DDC	38
8929355	FP8929355	29
8929357	8929357DDC	32
8929387	8929387DDC	21
8929388	8929388DDC	21
8929393	8929393DDC	46
8929415	8929415DDC	37
8929422	8929422DDC	20
8929425	8929425DDC	32
8929427	8929427DDC	20
8929448	8929448DDC	23
8929479	FP8929479	47
8929480	FP8929480	48
8929510	8929510DDC	20
8929512	8929512DDC	19
8929529	8929529DDC	14
8929573	8929573DDC	35
8929589	8929589DDC	35
8929590	8929590DDC	35
8929670	8929670DDC	22
8929671	8929671DDC	22
8929671A	8929671DDC	22
8929672A	8929672DDC	22
8929673A	FP8929673A	22
8929680	8929680DDC	22
8929681	8929681DDC	22
8929682	8929682DDC	22
8929683	FP8929683	22
8929690	8929690DDC	40
8929691	FP8929691	40
8929692	FP8929692	40
8929693	FP8929693	40
8929697	FP8929697	23
8929698	FP8929698	23

## Detroit Diesel Series 60

OEM/ MFR No.	Part No.	Page No.
8929710	8929710DDC	28
8929740	8929740DDC	38
8929787	FP8929787	47
8929803	8929803DDC	33
8929875	8929875DDC	16
9411502	FP9411502	16
A23516918	23516918DDC	48
A23532468	23532468DDC	26
A8922407	8922407DDC	20
ABPRC1065671	107623BXR	14
ABPRC1065672	107622BXR	14
M235332562C1	23532562MC1FDDC	8
MCBS0060	MCBS0060DDC	41
R415164	23528065DDC	13
RW4123PRX	RW4123PRXM1DRMN	18
RW4123X	RW4123XM1DRMAN	18

*The parts listed in this catalog are representative of the engine parts available, but not all inclusive of current and/ or future offerings.*



# PART NUMBER INDEX

19594.....	14	5150193.....	52	8929085.....	57
19594.....	50	5155765.....	25	8929102.....	39
141346.....	29	5155765.....	57	8929102.....	52
141346.....	56	5177778.....	25	8929105.....	37
172743.....	13	5177778.....	57	8929105.....	56
1024612.....	43	5180250.....	30	8929126.....	37
2351817.....	11	5180250.....	56	8929126.01.....	36
5101760.....	36	5188405.....	29	8929127.....	37
5103534.....	23	5188405.....	56	8929127.01.....	36
5103534.....	55	5199569.....	27	8929130.....	39
5103646.....	28	5230001.....	45	8929130.....	53
5103951.....	16	5234699.....	48	8929134.....	20
5103951.....	52	5234699.....	49	8929134.....	53
5104439.....	32	5234699.....	52	8929157.....	19
5104439.....	57	5234702.....	49	8929158.....	20
5104701.....	45	5234702.....	52	8929158.....	53
5104701.....	52	8547625.....	41	8929168.....	21
5111424.....	40	8547626.....	41	8929168.....	53
5111424.....	57	8922383.....	19	8929176.....	28
5113825.....	39	8922740.....	24	8929176.....	53
5116197.....	23	8922740.....	52	8929213.....	38
5116197.....	57	8923313.....	32	8929213.....	53
5117005.....	40	8923313.....	56	8929216.....	12
5117005.....	57	8923526.....	48	8929216.....	53
5117269.....	39	8923528.....	48	8929253.....	48
5117269.....	52	8924517.....	40	8929253.....	53
5117362.....	38	8924517.....	56	8929255.....	36
5126327.....	25	8926285.....	40	8929280.....	38
5127978.....	24	8926285.....	57	8929280.....	53
5132155.....	17	8926993.....	32	8929285.....	14
5132155.....	52	8926993.....	56	8929285.....	53
5133981.....	23	8929013.....	28	8929289.....	38
5133981.....	57	8929013.....	52	8929289.....	53
5138643.....	36	8929015.....	40	8929299.....	15
5141452.....	22	8929015.....	56	8929299.....	53
5141452.....	52	8929019.....	29	8929302.....	38
5147345.....	23	8929019.....	56	8929302.....	53
5147345.....	56	8929024.....	11	8929318.....	38
5148373.....	29	8929062.....	12	8929318.....	53
5148373.....	55	8929062.....	52	8929328.....	32
5149572.....	28	8929063.....	20	8929328.....	57
5149575.....	28	8929063.....	54	8929334.....	19
5149577.....	28	8929064.....	12	8929337.....	29
5149877.....	31	8929064.....	54	8929337.....	55
5150193.....	49	8929085.....	23	8929340.....	38

## Detroit Diesel Series 60

8929340.....	53	8929698.....	23	23505992 .....	50
8929341.....	38	8929698.....	57	23506153.....	33
8929341.....	53	8929710 .....	28	23506153.....	54
8929342.....	38	8929740 .....	38	23506247.....	38
8929342.....	53	8929740 .....	53	23506247.....	50
8929344.....	24	8929787.....	47	23506325 .....	16
8929344.....	53	8929803.....	33	23506350 .....	35
8929347.....	24	8929803.....	53	23506545 .....	47
8929347.....	53	8929875.....	16	23506546 .....	47
8929348.....	38	9411502 .....	16	23506549 .....	47
8929348.....	53	9411502 .....	54	23506553 .....	49
8929355.....	29	11504571 .....	39	23506553 .....	56
8929355.....	55	11504571 .....	55	23506555 .....	49
8929357.....	32	11504822.....	39	23506555 .....	55
8929357.....	55	11504822.....	55	23506556 .....	49
8929387.....	21	11509584.....	20	23506556 .....	50
8929388.....	21	11509584.....	56	23506557.....	49
8929393.....	46	23501544.....	22	23506557.....	57
8929393.....	55	23501544.....	50	23506558 .....	47
8929415.....	37	23501576.....	34	23506560 .....	49
8929422.....	20	23501577.....	34	23506560 .....	57
8929425.....	32	23501580.....	49	23506563 .....	48
8929425.....	57	23501580.....	50	23506564 .....	49
8929427.....	20	23502879.....	11	23506564 .....	56
8929427.....	53	23502879.....	55	23507073.....	20
8929448.....	23	23503535 .....	11	23507073.....	50
8929448.....	55	23503704.....	11	23507438.....	32
8929479.....	47	23503707.....	22	23507438.....	57
8929480.....	48	23503747 .....	30	23507504.....	34
8929510.....	20	23503747 .....	50	23508392 .....	38
8929510.....	53	23503825 .....	17	23508392 .....	50
8929512.....	19	23503826 .....	17	23508408 .....	14
8929529.....	14	23503827.....	17	23508408 .....	50
8929529.....	53	23504966 .....	13	23508410.....	13
8929573.....	35	23505024.....	20	23509067 .....	18
8929589.....	35	23505024.....	50	23509105.....	17
8929590.....	35	23505248.....	49	23509105.....	54
8929670.....	22	23505248.....	50	23509203 .....	11
8929671.....	22	23505249.....	47	23509204 .....	12
8929680.....	22	23505643 .....	12	23509204 .....	54
8929681.....	22	23505643 .....	54	23511362.....	31
8929682.....	22	23505886 .....	24	23511574 .....	38
8929683.....	22	23505891.....	24	23511574 .....	56
8929690.....	40	23505891.....	50	23511666.....	33
8929691.....	40	23505892 .....	24	23511666.....	50
8929692.....	40	23505892 .....	50	23511745 .....	11
8929693.....	40	23505896 .....	19	23511746 .....	11
8929697.....	23	23505902 .....	50	23511746 .....	50
8929697.....	57	23505992 .....	38	23511870 .....	45

23511870.....	51	23518571.....	35	23530555.....	57
23511959.....	47	23518572.....	35	23530665.....	26
23511964.....	47	23518588.....	13	23530682.....	39
23511991.....	33	23519651.....	22	23530682.....	52
23511991.....	51	23520025.....	48	23530768.....	32
23511992.....	33	23520377.....	20	23530768.....	55
23511992.....	51	23520377.....	51	23531249.....	27
23512048.....	20	23520818.....	37	23531250.....	27
23512048.....	51	23520818.....	57	23531251.....	30
23512307.....	11	23520820.....	49	23531251.....	52
23512307.....	55	23520820.....	57	23531252.....	28
23513559.....	21	23521781.....	30	23531252.....	52
23513559.....	51	23521781.....	56	23531254.....	31
23513578.....	23	23521894.....	41	23531257.....	18
23513578.....	51	23521894.....	51	23531604.....	22
23513842.....	39	23521935.....	33	23531605.....	22
23513842.....	51	23521935.....	51	23531606.....	22
23514371.....	37	23522269.....	33	23532307.....	9
23514371.....	56	23522269.....	51	23532333.....	33
23514708.....	16	23522279.....	39	23532436.....	17
23515145.....	15	23522279.....	52	23532555.....	26
23515470.....	49	23522433.....	20	23532557.....	26
23515470.....	51	23522433.....	54	23532558.....	26
23515581.....	28	23522495.....	29	23532561.....	26
23515582.....	28	23522707.....	18	23532562.....	26
23515597.....	21	23522721.....	18	23532565.....	9
23515635.....	13	23522975.....	41	23532574.....	9
23515946.....	58	23522975.....	52	23532577.....	9
23516100.....	12	23523930.....	34	23532590.....	26
23516100.....	51	23524657.....	49	23532797.....	38
23516322.....	33	23524657.....	52	23532850.....	48
23516322.....	51	23525500.....	27	23532850.....	52
23516919.....	48	23525566.....	31	23533147.....	45
23516969.....	23	23526039.....	18	23533147.....	52
23516969.....	51	23526141.....	28	23533552.....	35
23516993.....	48	23526142.....	28	23533690.....	31
23517242.....	39	23527225.....	21	23533692.....	22
23517242.....	56	23527914.....	22	23533983.....	33
23517845.....	47	23528065.....	13	23533983.....	52
23517875.....	33	23528491.....	41	23534745.....	46
23517875.....	51	23528491.....	52	23535280.....	22
23517911.....	32	23528493.....	29	23535700.....	45
23517911.....	56	23528939.....	32	23535700.....	52
23517912.....	32	23528939.....	57	23536442.....	33
23517912.....	56	23529596.....	35	23537081.....	9
23517973.....	20	23529629.....	35	23537111.....	45
23518092.....	38	23530554.....	23	23537111.....	52
23518355.....	22	23530554.....	57	23538858.....	31
23518355.....	51	23530555.....	23	1024613JCB.....	43

1024614JCB .....	43	23505249DDC.....	47	23511746DDC.....	50
1033020JCB .....	44	23505886DDC.....	24	23511870DDC .....	45
107622BXR.....	14	23505891DDC.....	24	23511870DDC .....	51
107623BXR.....	14	23505891DDC.....	50	23511991DDC .....	33
1082JCB .....	44	23505892DDC.....	24	23511991DDC .....	51
1082JCB .....	50	23505892DDC.....	50	23511992DDC .....	33
1083JCB .....	44	23505895, 23520136.....	18	23511992DDC .....	51
1083JCB .....	50	23505896DDC.....	19	23512048DDC.....	20
11504571DDC .....	39	23505902DDC.....	50	23512048DDC.....	51
11504571DDC .....	55	23505992DDC.....	38	23512307DDC .....	11
11504822DDC.....	39	23505992DDC.....	50	23512307DDC .....	55
11504822DDC.....	55	23506247DDC.....	38	23512691MCBDDC .....	10
12246JCB .....	43	23506247DDC.....	50	23512691MCBDDC .....	51
12261JCB .....	43	23506325DDC.....	16	23513559DDCR.....	21
14087JCB .....	42	23506350DDC.....	35	23513559DDCR.....	51
141346DDC .....	29	23506546DDC .....	47	23513578DDC .....	23
141346DDC .....	56	23506549DDC .....	47	23513578DDC .....	51
143-6479.....	42	23506553DDC.....	49	23513842DDC.....	39
172743BWT.....	13	23506553DDC.....	56	23513842DDC.....	51
18188JCB .....	43	23506555DDC.....	49	23514371DDC .....	37
18233JCB .....	43	23506555DDC.....	55	23514371DDC .....	56
19229JCB .....	43	23506556DDC.....	49	23514708DDC .....	16
19594JCB .....	14	23506556DDC.....	50	23515145DDC .....	15
19594JCB .....	50	23506557DDC.....	49	23515470DDC .....	49
1FKS60SPREM.....	8	23506557DDC.....	57	23515470DDC .....	51
1FS605 .....	8	23506560DDC.....	49	23515581DDC .....	28
20229JCB .....	44	23506560DDC.....	57	23515582DDC.....	28
20229JCB .....	50	23506563DDC.....	48	23515635MDDC.....	13
2299JCB .....	43	23506564DDC .....	49	23516100DDC .....	12
23501544DDC.....	22	23506564DDC .....	56	23516100DDC .....	51
23501544DDC.....	50	23507073DDC.....	20	23516322DDC.....	33
23501576C.....	34	23507073DDC.....	50	23516322DDC.....	51
23501576CDDC.....	34	23507438DDC.....	32	23516918DDC .....	48
23501576DDC .....	34	23507438DDC.....	57	23516919DDC .....	48
23501577DDC .....	34	23507504C .....	34	23516969DDC .....	23
23501580DDC.....	49	23507504CDDC .....	34	23516969DDC .....	51
23501580DDC.....	50	23507504DDC.....	34	23516993DDC .....	48
23503704DDC.....	11	23508392DDC.....	38	23517242DDC .....	39
23503707DDC.....	22	23508392DDC.....	50	23517242DDC .....	56
23503747DDC .....	30	23508408DDC .....	14	23517845DDCR.....	47
23503747DDC .....	50	23508408DDC .....	50	23517875DDC .....	33
23503825DDC.....	17	23508410DDC.....	13	23517875DDC .....	51
23503826DDC.....	17	23511362DDCR.....	31	23517911DDC .....	32
23503827DDC.....	17	23511574DDC .....	38	23517911DDC .....	56
23504966DDC .....	13	23511574DDC .....	56	23517912DDC .....	32
23505024DDC.....	20	23511666DDC .....	33	23517912DDC .....	56
23505024DDC.....	50	23511666DDC .....	50	23517973DDC .....	20
23505248DDC.....	49	23511745DDC.....	11	23518092DDC.....	38
23505248DDC.....	50	23511746DDC.....	11	23518178DDC .....	11

23518355DDC.....	22	23530682DDC.....	39	23537081DDC.....	9
23518355DDC.....	51	23530682DDC.....	52	23537111DDC.....	45
23518571DDC.....	35	23531249DDC.....	27	23537111DDC.....	52
23518572DDC.....	35	23531250DDC.....	27	23538858DDCR.....	31
23518588DDC.....	13	23531251DDC.....	30	2411JCB.....	44
23518588MDDC.....	13	23531251DDC.....	52	2411JCB.....	52
23519651DDC.....	22	23531252DDC.....	28	25223JCB.....	42
23519651DDC.....	51	23531252DDC.....	52	28343JCB.....	43
23520025DDC.....	48	23531254DDCR.....	31	316GC1210A.....	18
23520377DDC.....	20	23531604DDC.....	22	5004187BXR.....	14
23520377DDC.....	51	23531605DDC.....	22	5004188BXR.....	14
23521781DDC.....	30	23531606DDC.....	22	5103534DDC.....	23
23521781DDC.....	56	23532307DDC.....	9	5103534DDC.....	55
23521894DDC.....	41	23532333DDC.....	33	5103646DDC.....	28
23521894DDC.....	51	23532436DDC.....	17	5103951DDC.....	16
23521935DDC.....	33	23532468DDC.....	26	5103951DDC.....	52
23521935DDC.....	51	23532555DDC.....	26	5104439DDC.....	32
23522269DDC.....	33	23532555QMC1FDDC.....	8	5104439DDC.....	57
23522269DDC.....	51	23532557DDC.....	26	5104701DDC.....	45
23522279DDC.....	39	23532558DDC.....	26	5104701DDC.....	52
23522279DDC.....	52	23532561DDC.....	26	5111424DDC.....	40
23522707DDC.....	18	23532561MC1FDDC.....	9	5111424DDC.....	57
23522975DDC.....	41	23532561QMC1FDDC.....	9	5116197DDC.....	23
23522975DDC.....	52	23532562DDC.....	26	5116197DDC.....	57
23523930DDC.....	34	23532562MCOHDDC.....	9	5117005DDC.....	40
23524657DDC.....	49	23532562MC1FDDC.....	8	5117005DDC.....	57
23524657DDC.....	52	23532562QMC0HDDC.....	10	5117269DDC.....	39
23525500DDC.....	27	23532562QMC1FDDC.....	9	5117269DDC.....	52
23525566DDCR.....	31	23532565DDC.....	9	5117362DDC.....	38
23525566HG.....	31	23532574DDC.....	9	5126327DDC.....	25
23525566HGDDCR.....	31	23532577DDC.....	9	5132155DDC.....	17
23526039DDC.....	18	23532590DDC.....	26	5132155DDC.....	52
23526141DDC.....	28	23532797DDC.....	38	5133981DDC.....	23
23526142DDC.....	28	23532850DDC.....	48	5133981DDC.....	57
23527225DDC.....	21	23532850DDC.....	52	5138643DDC.....	36
23527914DDC.....	22	23533147DDC.....	45	5141452DDC.....	22
23528065DDC.....	13	23533147DDC.....	52	5141452DDC.....	52
23528491DDC.....	41	23533552DDC.....	35	5147345DDC.....	23
23528491DDC.....	52	23533690DDCR.....	31	5147345DDC.....	56
23528493DDC.....	29	23533692DDC.....	22	5148373DDC.....	29
23528939DDC.....	32	23533983DDC.....	33	5148373DDC.....	55
23528939DDC.....	57	23533983DDC.....	52	5149572DDC.....	28
23529596DDC.....	35	23534745DDC.....	46	5149575DDC.....	28
23529629DDC.....	35	23535280DDC.....	22	5149577DDC.....	28
23530554DDC.....	23	23535700DDC.....	45	5149877DDC.....	31
23530554DDC.....	57	23535700DDC.....	52	5150193DDC.....	49
23530555DDC.....	23	23536442DDC.....	33	5150193DDC.....	52
23530555DDC.....	57	23536443DDC.....	9	5155765DDC.....	25
23530665DDC.....	26	23536443DDC.....	52	5155765DDC.....	57

5177778DDC .....	25	8922383DDC.....	19	8929253DDC.....	53
5177778DDC .....	57	8922407DDC.....	20	8929255DDC.....	36
5180250DDC .....	30	8922407DDC.....	52	8929280DDC.....	38
5180250DDC .....	56	8922740DDC.....	24	8929280DDC.....	53
5188405DDC.....	29	8922740DDC.....	52	8929285DDC.....	14
5188405DDC.....	56	8923313DDC.....	32	8929285DDC.....	53
5199569DDC.....	27	8923313DDC.....	56	8929289DDC.....	38
5228773DDCR.....	46	8923526DDC.....	48	8929289DDC.....	53
5228773R.....	46	8923528DDC.....	48	8929299DDC.....	15
5230001DDC.....	45	8924517DDC.....	40	8929299DDC.....	53
5234699DDC.....	49	8924517DDC.....	56	8929302DDC.....	38
5234699DDC.....	52	8926285DDC.....	40	8929302DDC.....	53
5234699KDDC.....	48	8926285DDC.....	57	8929318DDC.....	38
5234699KDDC.....	52	8926993DDC.....	32	8929318DDC.....	53
5234702DDC.....	49	8926993DDC.....	56	8929328DDC.....	32
5234702DDC.....	52	8929013DDC.....	28	8929328DDC.....	57
5234795DDCR.....	46	8929013DDC.....	52	8929337DDC.....	29
5234795R.....	46	8929019DDC.....	29	8929337DDC.....	55
5234870DDCR.....	46	8929019DDC.....	56	8929340DDC.....	38
5234870R.....	46	8929024DDC.....	11	8929340DDC.....	53
5234935DDCR.....	46	8929062DDC.....	12	8929341DDC.....	38
5234935R.....	46	8929062DDC.....	52	8929341DDC.....	53
5234940DDCR.....	46	8929085DDC.....	23	8929342DDC.....	38
5234940R.....	46	8929085DDC.....	57	8929342DDC.....	53
5235575DDCR.....	46	8929085S.....	23	8929344DDC.....	24
5235575R.....	46	8929085S.....	57	8929344DDC.....	53
5235580DDCR.....	46	8929102DDC.....	39	8929347DDC.....	24
5235580R.....	46	8929102DDC.....	52	8929347DDC.....	53
5235605DDCR.....	46	8929105DDC.....	37	8929348DDC.....	38
5235605R.....	46	8929105DDC.....	56	8929348DDC.....	53
5235915DDCR.....	46	8929126.01DDC.....	36	8929357DDC.....	32
5235915R.....	46	8929126DDC.....	37	8929357DDC.....	55
5236347DDCR.....	46	8929127.01DDC.....	36	8929387DDC.....	21
5236347R.....	46	8929127DDC.....	37	8929388DDC.....	21
5236977DDCR.....	46	8929130DDC.....	39	8929393DDC.....	46
5236977R.....	46	8929130DDC.....	53	8929393DDC.....	55
5236978DDCR.....	46	8929134DDC.....	20	8929415DDC.....	37
5236978R.....	46	8929134DDC.....	53	8929422DDC.....	20
5237014DDCR.....	46	8929158DDC.....	20	8929425DDC.....	32
5237014R.....	46	8929158DDC.....	53	8929425DDC.....	57
5237045DDCR.....	46	8929168DDCR.....	21	8929427DDC.....	20
5237045R.....	46	8929168DDCR.....	53	8929427DDC.....	53
5237466DDCR.....	46	8929176DDC.....	28	8929448DDC.....	23
5237466R.....	46	8929176DDC.....	53	8929448DDC.....	55
5237635DDCR.....	46	8929213DDC.....	38	8929510DDC.....	20
5237635R.....	46	8929213DDC.....	53	8929510DDC.....	53
5237650DDCR.....	46	8929216DDC.....	12	8929512DDC.....	19
5237650R.....	46	8929216DDC.....	53	8929529DDC.....	14
7671JCB.....	43	8929253DDC.....	48	8929529DDC.....	53

8929573DDC.....	35	FP23520820.....	49	RW4122RXM1D.....	18
8929589DDC.....	35	FP23520820.....	57	RW4122XM1DRMAN .....	18
8929590DDC.....	35	FP23522433.....	20	RW4123PRXM1DRMN .....	18
8929670DDC.....	22	FP23522433.....	54	RW4123PXM1DRMAN .....	18
8929671A.....	22	FP23522495.....	29	RW4123XM1DRMAN .....	18
8929671DDC.....	22	FP316GC1210A.....	18	RW4124XM1DRMAN .....	18
8929672A .....	22	FP5101760.....	36	RW4125PXM1DRMAN .....	18
8929672A .....	53	FP5113825 .....	39	S601NJMCBDDC .....	28
8929672DDC.....	22	FP5127978 .....	24	S601NJMCBDDC .....	54
8929672DDC.....	53	FP8547625 .....	41		
8929673A .....	22	FP8547626 .....	41		
8929673A .....	54	FP8929015 .....	40		
8929680DDC.....	22	FP8929015 .....	56		
8929681DDC.....	22	FP8929063.....	20		
8929682DDC.....	22	FP8929063.....	54		
8929690DDC.....	40	FP8929064.....	12		
8929710DDC .....	28	FP8929064.....	54		
8929740DDC .....	38	FP8929085S.....	23		
8929740DDC .....	53	FP8929085S.....	57		
8929803DDC.....	33	FP8929157 .....	19		
8929803DDC.....	53	FP8929334.....	19		
8929875DDC.....	16	FP8929355.....	29		
A23516918 .....	48	FP8929355.....	55		
A23532468 .....	26	FP8929479 .....	47		
A8922407.....	20	FP8929480.....	48		
A8922407.....	52	FP8929673A.....	22		
FP11509584 .....	20	FP8929673A.....	54		
FP11509584 .....	56	FP8929683.....	22		
FP1FKS60SPREM .....	8	FP8929691 .....	40		
FP23502879.....	11	FP8929692.....	40		
FP23502879.....	55	FP8929693.....	40		
FP23503535.....	11	FP8929697.....	23		
FP23505643.....	12	FP8929697.....	57		
FP23505643.....	54	FP8929698.....	23		
FP23506153.....	33	FP8929698.....	57		
FP23506153.....	54	FP8929787 .....	47		
FP23506545.....	47	FP9411502 .....	16		
FP23506558.....	47	FP9411502 .....	54		
FP23509105 .....	17	M235332562C1 .....	8		
FP23509105 .....	54	MC1FS605DDC .....	8		
FP23509203.....	11	MCB60HBK .....	32		
FP23509204.....	12	MCB60HBK .....	55		
FP23509204.....	54	MCBS0060 .....	41		
FP23511959 .....	47	MCBS0060 .....	54		
FP23511964 .....	47	MCBS0060DDC .....	41		
FP23515597 .....	21	MCBS0060DDC .....	54		
FP23515946.....	58	MCBS601NJ .....	45		
FP23520818.....	37	RW1160XM1DRMAN .....	18		
FP23520818.....	57	RW4122PXM1DRMAN .....	18		

# SUBJECT INDEX

## **A**

- Accessory Drive Components..... 11
- Air Management Components ..... 13

## **C**

- Cooling System Components..... 16
- Crankshafts & Components ..... 21
- Cylinder Components..... 26
- Cylinder Heads & Components..... 31

## **E**

- Engine Blocks & Components..... 38
- Engine Brakes & Components ..... 42
- Engine Parts..... 50

## **F**

- Fuel System Components..... 45

## **N**

- Natural Gas Engine Components ..... 58

## **O**

- Overhaul Kits..... 8



# TABLES

## Overhaul Kits

Table 1: Inframe Kits .....	8
Table 2: Articulated Piston Inframe Kits .....	8
Table 3: Overhaul Kits .....	9
Table 4: Articulated Piston Overhaul Kits .....	9
Table 5: Gaskets, Rings & Seals .....	10

## Accessory Drive Components

Table 6: Bearings .....	11
Table 7: Bushings .....	11
Table 8: Gaskets, Rings & Seals .....	11
Table 9: Gaskets, Rings & Seals .....	12

## Air Management Components

Table 10: Turbochargers .....	13
Table 11: Gaskets, Rings & Seals .....	14
Table 12: Air Compressors - Reman .....	14
Table 13: Gaskets, Rings & Seals .....	15

## Cooling System Components

Table 14: Hoses .....	16
Table 15: Sensors .....	16
Table 16: Gaskets, Rings & Seals .....	16
Table 17: Thermostats .....	17
Table 18: Gaskets, Rings & Seals .....	17
Table 19: Overhaul Kits .....	17
Table 20: Water Pumps - New .....	18
Table 21: Water Pumps - Reman .....	18
Table 22: Water Pump Covers .....	19
Table 23: Water Pump Shafts .....	19
Table 24: Crank Keys .....	19
Table 25: Water Pump Impellers .....	19
Table 26: Bearings .....	20
Table 27: Gaskets, Rings & Seals .....	20
Table 28: Hardware .....	20

## Crankshafts & Components

Table 29: Crankshafts - New .....	21
Table 30: Sensors .....	21
Table 31: Bull Gears .....	21
Table 32: Bearings .....	22
Table 33: Gaskets, Rings & Seals .....	22
Table 34: Hardware .....	23
Table 35: Oil Pumps .....	24
Table 36: Valves .....	24

Table 37: Bushings .....	24
Table 38: Gaskets, Rings & Seals .....	24
Table 39: Hardware .....	25

## Cylinder Components

Table 40: Cylinder Head Kits .....	26
Table 41: Cylinder Kits .....	26
Table 42: Liners .....	26
Table 43: Liner Kits .....	27
Table 44: Liner Shims .....	27
Table 45: Liner Sleeves .....	27
Table 46: Bearings .....	28
Table 47: Gaskets, Rings & Seals .....	28
Table 48: Hardware .....	29
Table 49: Piston Kits .....	29
Table 50: Nozzles .....	29
Table 51: Gaskets, Rings & Seals .....	30
Table 52: Hardware .....	30

## Cylinder Heads & Components

Table 53: Cylinder Heads - New .....	31
Table 54: Cylinder Heads - Reman .....	31
Table 55: Related Parts .....	32
Table 56: Gaskets, Rings & Seals .....	33
Table 57: Intake Valve Kits .....	34
Table 58: Exhaust Valve Kits .....	34
Table 59: Valve Guides .....	34
Table 60: Valves .....	35
Table 61: Valve Guides .....	35
Table 62: Elements .....	36
Table 63: Inserts .....	36
Table 64: Isolator Parts .....	36
Table 65: Rocker Buttons .....	36
Table 66: Seats .....	37
Table 67: Hardware .....	37

## Engine Blocks & Components

Table 68: Sensors .....	38
Table 69: Related Parts .....	38
Table 70: Gaskets, Rings & Seals .....	38
Table 71: Hardware .....	39
Table 72: Hardware .....	40
Table 73: Bearings .....	40
Table 74: Gaskets, Rings & Seals .....	41
Table 75: Oil Cooler Cores .....	41

Table 76: Gaskets, Rings & Seals .....41

**Engine Brakes & Components**

Table 77: Tune Up Kits .....42  
 Table 78: Brake Assemblies.....42  
 Table 79: Pistons .....43  
 Table 80: Air Cylinders.....43  
 Table 81: Solenoids .....43  
 Table 82: Switches.....43  
 Table 83: Terminals.....43  
 Table 84: Housings .....44  
 Table 85: Gaskets, Rings & Seals .....44

**Fuel System Components**

Table 86: Injector Kits .....45  
 Table 87: Gaskets, Rings & Seals .....45  
 Table 88: Injectors - New .....45  
 Table 89: Injectors - Reman.....46  
 Table 90: Injector Tubes.....46  
 Table 91: Hardware.....46  
 Table 92: Fuel Pumps .....47  
 Table 93: Couplings .....47  
 Table 94: Fuel Pump Drives.....47  
 Table 95: Fuel Pump Drive Shafts .....47  
 Table 96: Gears .....47  
 Table 97: Hubs.....48  
 Table 98: Switches.....48  
 Table 99: Valves.....48  
 Table 100: Bearings.....48  
 Table 101: Gaskets, Rings & Seals .....48  
 Table 102: Hardware.....49

**Engine Parts**

Table 103: Gaskets, Rings & Seals .....50  
 Table 104: Hardware.....55  
 Table 105: Spark Plugs.....58

**Cross Reference**

Table 106: OEM/ MFR Cross Reference .....59

*NOTES*

A large grid area for taking notes, consisting of many small squares. The grid is approximately 30 columns wide and 40 rows high, providing a structured space for handwritten or typed notes.



*For information, updates, or corrections,  
please contact us at [feedback@TRPParts.com](mailto:feedback@TRPParts.com)*

*No part of this marketing material may be  
reproduced in any manner without written  
permission from TRP® North America.*

**TRP® North America**

750 Houser Way N.  
Renton, WA 98057

[www.trpparts.com](http://www.trpparts.com)